

Artemide®

2021





"Il Mondo di Ernesto"
Installation by Mario Cucinella Architects
Cortile della Farmacia, Università Statale di Milano
"Creative Connections" INTERNI

Il Mondo di Ernesto



Enlightened Parametric Sustainability

Carrying on the heritage of Ernesto Gismondi Artemide merges creativity and measure, knowledge and know-how collaborating with the main italian and international architects and designers.

Artemide designs and produces light through a synthesis of humanistic vision, scientific research, manufacturing and technè, the art of know-how, all measured with environmental and social sustainability.

Values, project culture and sustainable innovation sign the perspective of light design to anticipate the future in the present.





Sustainability Report

Since 2018 Artemide testifies and measures through the Sustainability Report a constant path towards a conscious and attentive project to humankind and the planet to highlight all the values that guide its perspective to the future.

The Sustainability Report, following the GRI - Global Reporting Initiative - guidelines and according to a core approach, declares and certifies multiple KPIs (key performance indicators), numerical indicators and measurable objectives relating to:

- environmental performance
- corporate governance
- social sustainability

The Sustainability Report demonstrates how Artemide promotes actions at all levels for a better quality of our future. Over the years, this commitment has led to obtain many certifications such as:

- ISO 9001 management system quality
- ISO 14001 environmental management system
- ISO 45001 management system for health and safety

Sustainable products & lighting projects

During the design phase Artemide favours the choice of recycled or recyclable raw materials with low environmental impact.

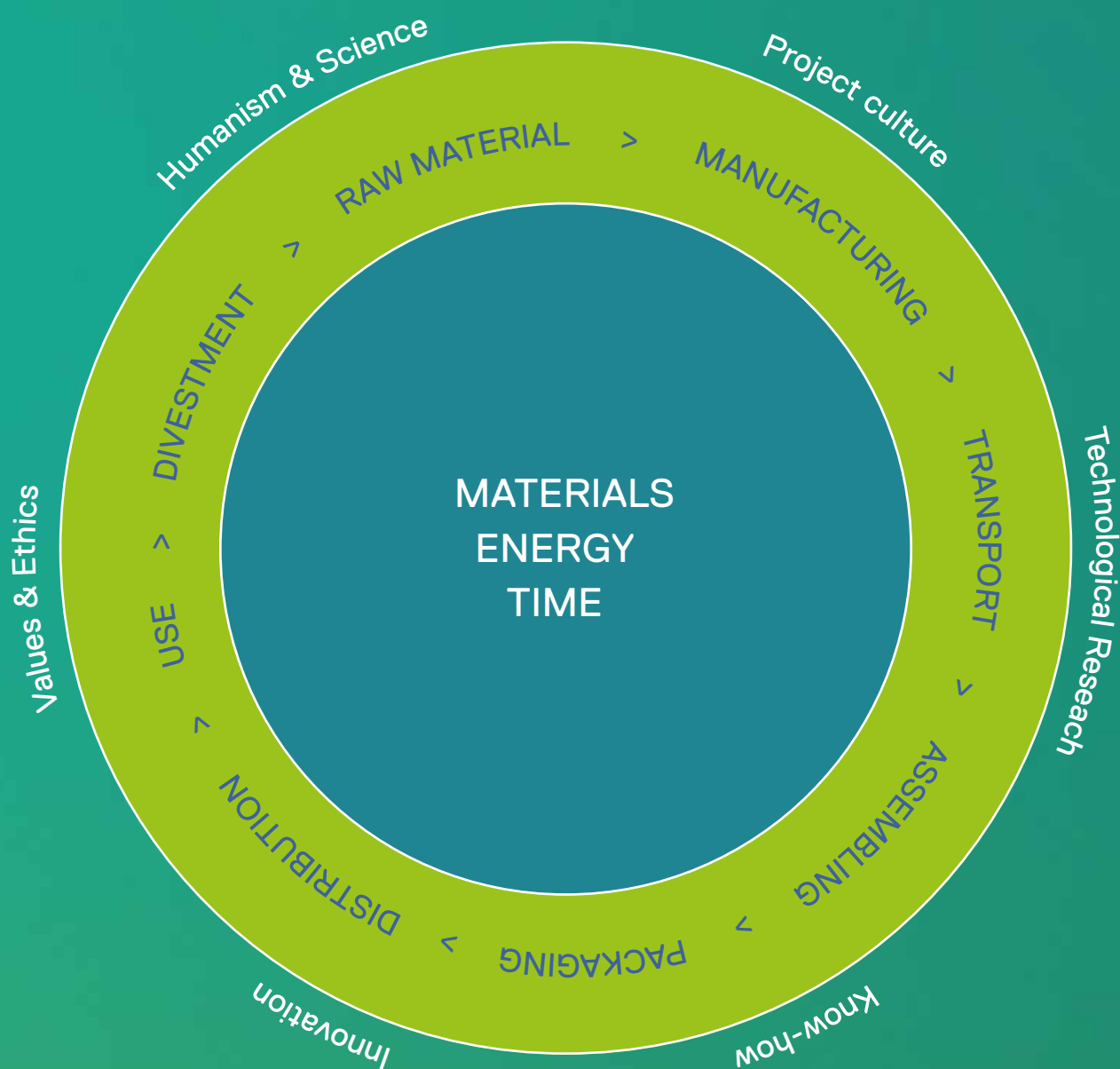
The attention to the environment has particularly focused on improving the efficiency of production processes, limiting waste and developing new technologies in order to reduce direct and indirect emissions and promote a corporate culture of respect for the environment.

Artemide Italian plants use only energy from certified renewable sources.

The choice to involve local suppliers limits transport distances and allows the creation of a solid network of shared competence.

Our products generate sustainability in the lighted space with a positive energy balance. Products with high efficiency reduce energy consumption in the use phase and light intelligences optimize installation time and add values thanks to a parametric interaction.

Long lasting innovative and beautiful products are witnesses of Artemide responsible design.



Light design is a tool to generate
new life quality, sustainable models
and ethic consciousness

In 2019 Artemide joined the United Nation Global Compact and since 2020 is recognised as a GC Advanced level company



United Nation Global Compact

United Nation Global Compact recognizes, through the GC Advanced level, companies that strive to be top reporters and declare that they have adopted and report on a broad range of best practices in sustainability governance and management.

Artemide is committed to pursue 8 of the 17 SDGs - Sustainable Development Goals - annually reporting the concrete results of their application.

Artemide activities contribute to global sustainable developments in terms of:

- Impacts on the Environment
- Impacts on People and Health
- Impacts on Employment and Economy

Company's strategy and daily functioning are based on a solid and responsible development project that promotes actions at all levels for a better quality of our future.

Planet

Communication

Health

Light is a
circular energy
that gives back
multiple values

“The Living Chapel” Laudato Si Garden
by Mario Cucinella Architects
Porto Caleri, Rosolina, Italy

A large, glowing, curved light structure, possibly a sculpture or architectural element, is set against a dramatic sunset sky. The sky transitions from deep blue at the top to vibrant orange and yellow near the horizon, with scattered clouds catching the low light. The light structure is a thick, bright white or yellowish curve that spans across the upper half of the frame. Three labels are placed along this curve: 'Space' near the top left, 'Humankind' in the middle right, and 'Nature' near the bottom left. The structure is supported by thin cables and a central vertical pole. In the background, a body of water and silhouettes of trees are visible under the twilight sky.

Space

Humankind

Nature

Light is one of the fundamental elements of life like water and air.

- Light is an invisible physical phenomenon that makes space, humanity and reality visible. Light transforms spaces in places and dynamic scenarios of relations.
- Light feeds humans physiological and psychological wellbeing marking the rhythm of our lives.
- Light activates a new environmental quality stimulating the natural process of plants growth and photosynthesis.

• Light can also sanitize spaces and bring people back together experiencing them thanks to INTEGRALIS® patented technology.

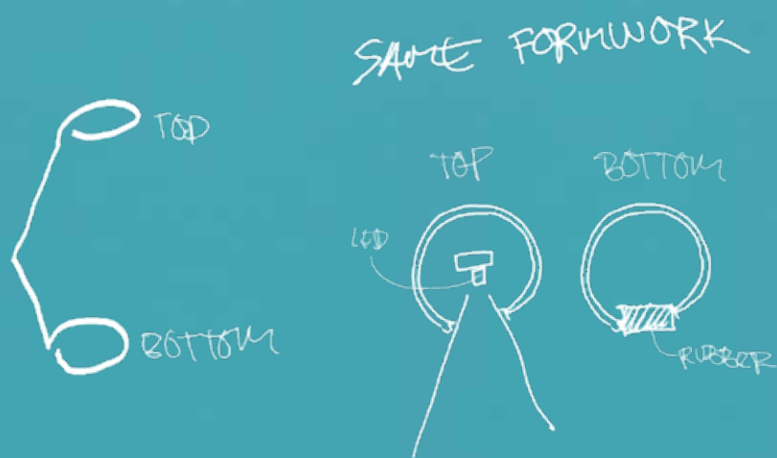
• Light supports communication, information and interaction transmitting data. Light can interact with natural and ambient phenomena according to measured parameters.

• Light design is a tool to generate new life quality, sustainable models and ethic consciousness. Today the project must offer a better alternative to what we already have, an “interactive design” between borders of technology and the humanistic contemporary culture.

Vine Light

BIG

PATENT OF
INVENTION

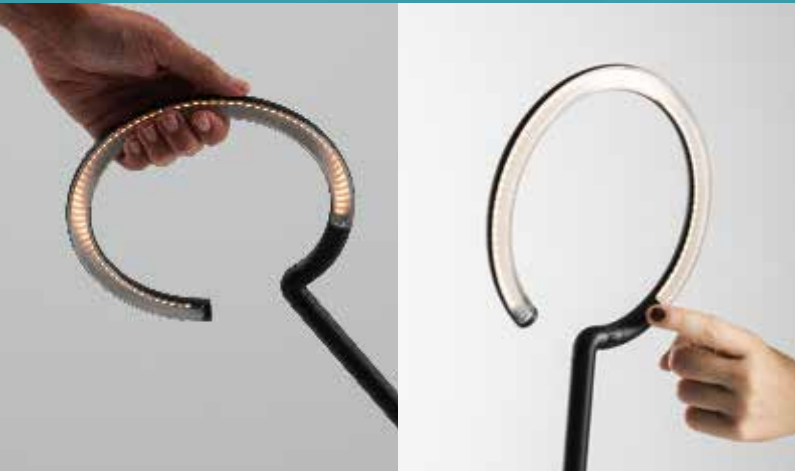


Vine Light is a pure and balanced line that reaches maximum freedom of movement with only two joints, to perfectly illuminate the work surface but also create multiple light scenarios, leaving everyone free to shape their own light with a simple movement.

An unbroken section measuring only 16 mm in diameter shapes the structure and houses all the opto-electronic and mechanical elements.

Its minimalist presence creates a perfect balance between different materials, weights, light quality, precision of movement and functionality, revealing a deep know-how merged with technological innovation.

What appears to be continuity is actually a succession of components with different functions and characteristics, which translate technological complexity into simplicity and freedom.



Touch dimmer



Optical Innovation



Controlled emission
for office lighting

High Uniformity

High Efficiency





Vine Light
Ø196 base x Ø186 head x 485 mm
Total Power: 8W

Vine Light Floor
Ø400 base x Ø350 head x 1998 mm
Total Power: 25W

Shared components for an intelligent and sustainable complete family

Vine Light Spot

Ø93 wall support x Ø186 head
x 215 mm
Total Power: 8W

Vine Light Wall

Ø93 wall support x Ø186 head
x 560 mm
Total Power: 8W

Vine Light Fixed

Ø93 base x Ø186 head x 485 mm
Total Power: 8W

● Black





Takku

Foster+Partners

Takku is a completely transversal portable light providing perfect illumination for the office. It can freely accompany us not only in the workplace but also in our personal and living spaces.

The head controls the diffused emission with the optical element on its lower surface.

The emission can be adjusted to 3 different brightness settings to support multiple activities and create different ambiances.

32 hours of freedom from the main electricity supply make it an ideal solution for the flexible interpretation of personal light in private and public places.

Takku
Ø180 x 190 mm
Total Power: 2,5W



- White
- Black
- Aluminum
- Titanium
- Red
- Blue



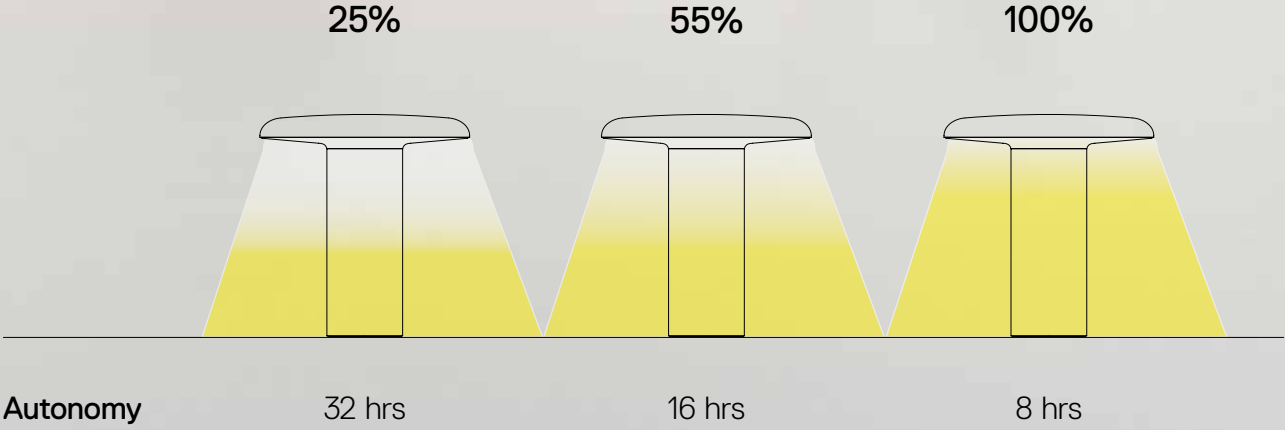
Photo by Pierpaolo Ferrari



Photo by Pierpaolo Ferrari



Smart portability
3 different light performances
Lithium Ion rechargeable battery
32 hours battery life
Exchanging energy
USB-C port



Stellar Nebula

BIG



Stellar Nebula S
Ø220 x 300 mm
Total Power: 12W

Stellar Nebula M
Ø300 x 375 mm
Total Power: 18W

Stellar Nebula L
Ø400 x 550 mm
Total Power: 24W

 Iridescent

Stellar Nebula is a family of suspension lamps designed by BIG to interpret and enhance artisan glass blowing with innovative finishing techniques.

Values, roles and limits of industrial and artisanal production are the core of this project idea, which aims to find a solution of industrial uniqueness.

Three different sizes of blowing moulds generate pieces that are always unique. The glass that is created is then treated with an innovative dichroic finishing process.

Artisan know-how and industrial innovation thus come together in the beauty of the material that enhances the magic of the interaction between glass and light.

→ STELLAR NEBULA



ARTEMIDE
APP



Sustainable Finishes

Dichroic finishes made
with an innovative and sustainable
metal vacuum deposition process
PVD (Physical Vapour Deposition)

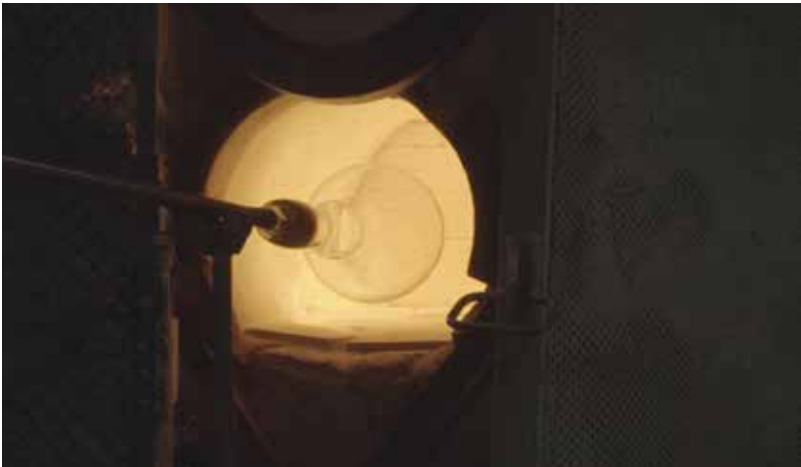
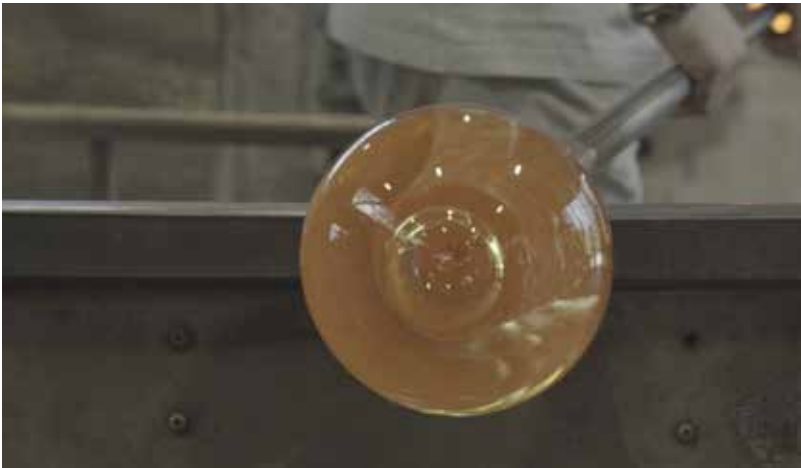
- 0 emissions, 0 waste
- Solid protective clearcoat
- Only 5% of solvents
(traditional systems: 75% of solvents)

Tradition & Innovation

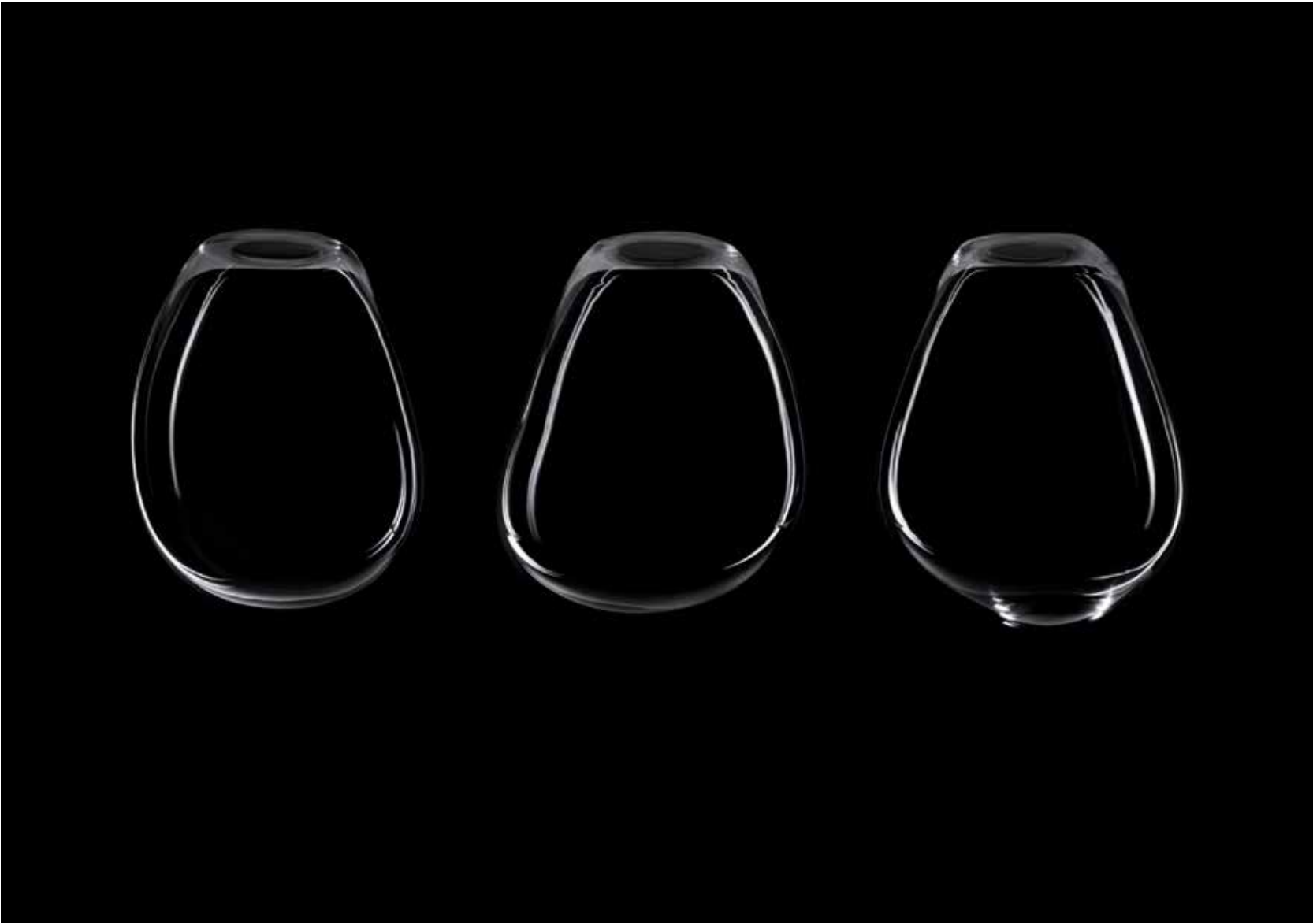
Artemide has always pursued past and future knowledge, enhanced traditional manufacturing within contemporary design.

BIG shapes a suspension lamp with the beauty of craftsmanship, proclaims a commendation to the uniqueness which comes from ancient techniques handed down through the generations.

The master glassmaker is in fact called upon to not only shape the glass by blowing into a standard mould but to also express his know-how with techniques that softly reshape the regular, basic shape and accentuate the diversity of each handcrafted piece.



Uniqueness & Seriality



Katà Métron

Mario Cucinella

PATENT OF
INVENTION

“Katà Métron makes it possible to create lighting micro-architectures that can be adapted to any space, shape and size. Together with Artemide, we have created an object capable of organising and redefining the space that surrounds us according to the most disparate needs”.

Mario Cucinella

Body

- White
- Black
- Red
- Blue
- Green
- Yellow

Optics

- White
- Black

Katà Métron 592

Suspension/Ceiling

592 x 100 x 50 mm

Total Power: 18W direct + 18W indirect

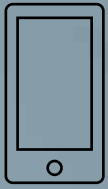
Katà Métron 1184

Suspension/Ceiling

1184 x 100 x 50 mm

Total Power: 35W direct + 23W indirect

Katà Métron finds inspiration in the relationship that lies at the heart of art, architecture and philosophy: measurement. The Greek expression “katà métron” means “according to right measure”. With this expression, the original Greek philosophical thought referred to the attitude of those who know how to take care of themselves. Greek architecture adopts a construction logic based on the idea of "module", that is the single element which creates the measure of the whole. It is the concept of order as a sequence of repeated elements. Finally, art is the union of philosophy and architecture.



ARTEMIDE
APP

Optical Innovation Refractive Technology

PATENT OF
INVENTION



Katà Métron combines simplicity, functionality and aesthetics.

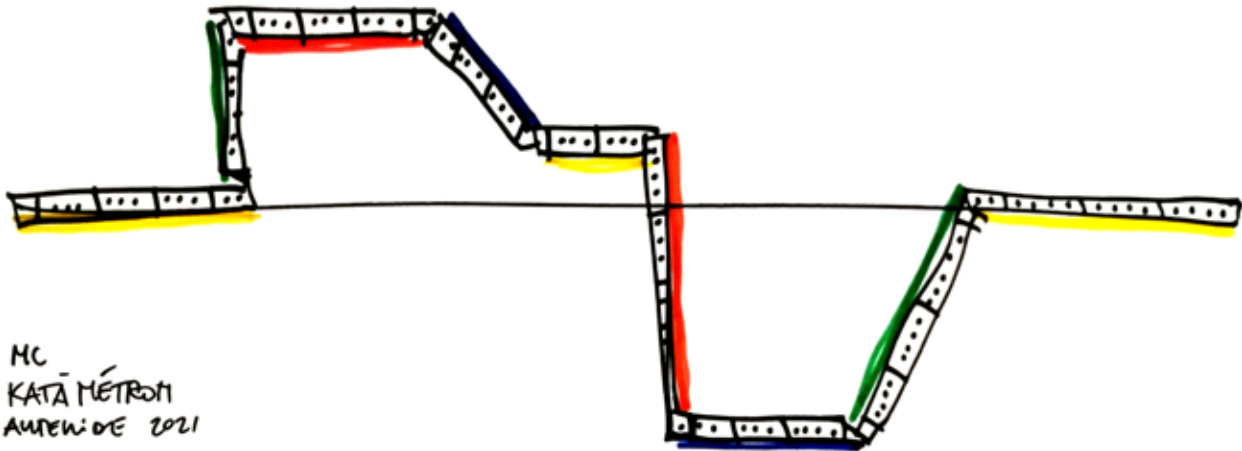
Innovation, culture of the project and shared commitment towards the creation of products that are increasingly sustainable and attentive to the use of the limited resources of our planet, lead to an innovative and surprising solution.

Mario Cucinella has designed an object in which the modular light elements can create an infinite number of combinations and shapes, allowing the design of lighting scenarios that are tailored with respect to the spaces and to the needs of the activities that take place in them.

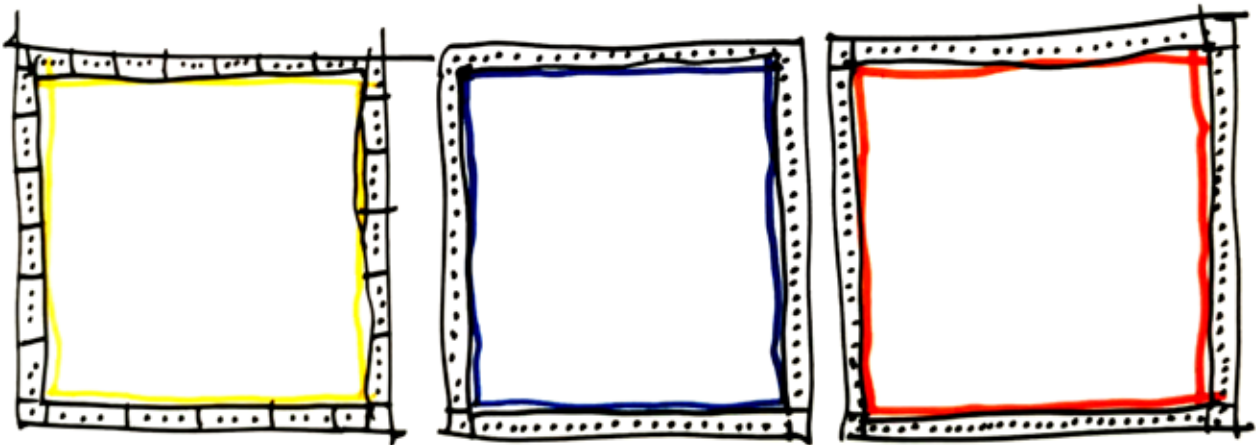
45°/90° Joints

Electro-Mechanical Connections

Host interactive intelligences
Presence, Daylight
& Environmental Quality Sensors



MC
KATÀ MÉTRON
AUGUST 2021



A .39 Refractive Carlotta de Bevilacqua



Refractive Lens
collects 100% of the LED luminous flux

High Efficiency
more than 90%

A.39 Refractive 300x1200
Ceiling/Recessed
300 x 1200 mm
Total Power: 35W

Body

- White
- Black

Optics

- White
- Black

A.39 Refractive's patented optical technology was developed to achieve maximum efficiency on a small scale, in compliance with the regulation for the lighting of workspaces. The lens is specially designed to intercept 100% of the flux emitted by the LED and control it with minimum dispersion so as to ensure more than 90% efficiency.

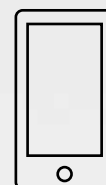
The lens is the primary optical system that collects and redirects the flux without intercepting the geometry of the cell in which it is inserted, thus avoiding a deterioration in performance in terms of quantity and quality of light emission.

The small cell in which the LED and lens are inserted acts only as screen to avoid direct viewing of the LED from certain angles but does not affect the flux emitted, leaving a clean, pure light, whose characteristics are defined solely by the primary optics.

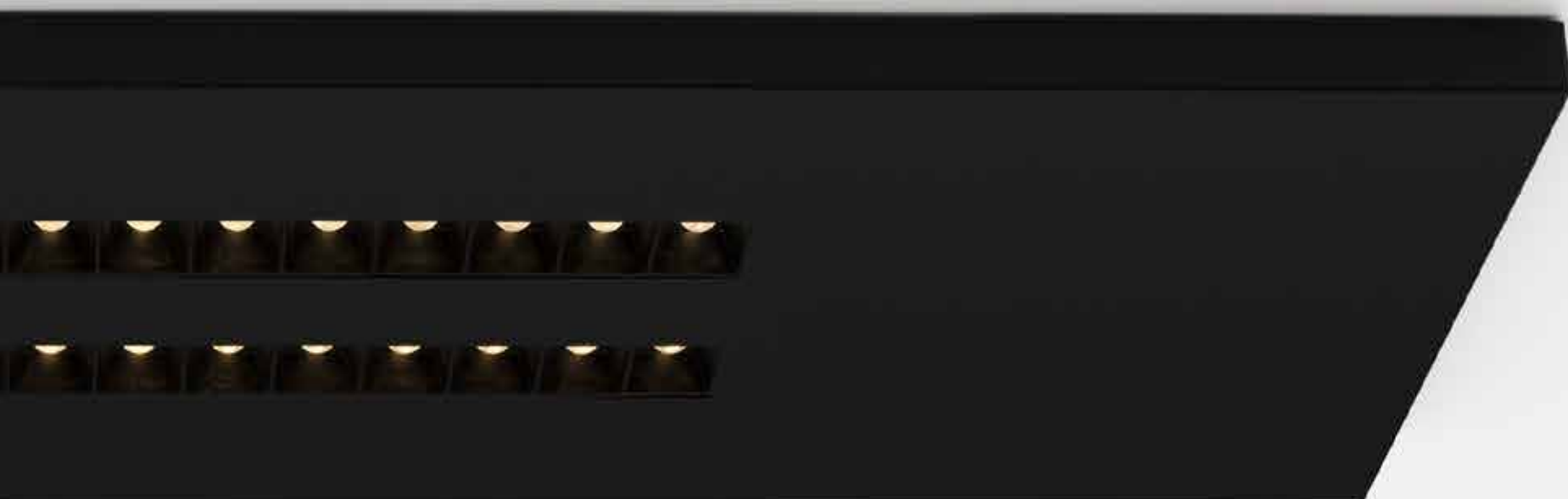


PATENT OF
INVENTION

→ A.39 REFRACTIVE



ARTEMIDE
APP



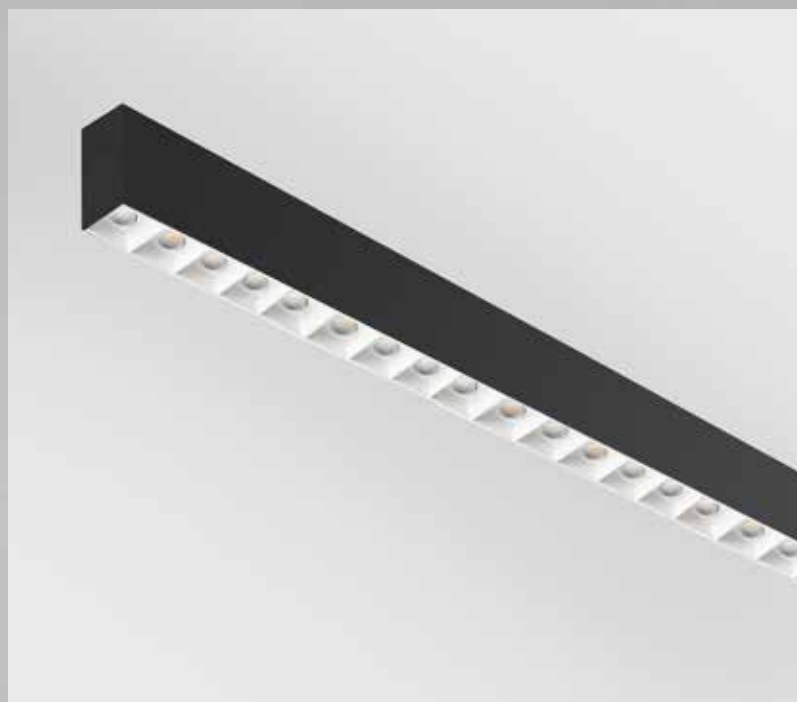
High efficacy
145 lm/W

Extreme glare control
UGR<19 - Luminance<3000 cd/m² @ 65°

A.39 Refractive 600x600
Ceiling/Recessed
600 x 600 mm
Total Power: 26W



A.39 Refractive
Suspension/Ceiling/Recessed
1184*/1482/2368/2960 x 85 x45 mm
Total Power: 35W*



INTEGRALIS®

AN UNIVERSAL LIGHT TO STAY SAFE TOGETHER

PATENT
PENDING



ARTEMIDE
APP

W/cm^2

IRRADIANCE

RADIANT POWER / UNIT AREA

the radiant power/unit area to be irradiated in a certain time
to reach the desired microbial photoinactivation

$t(s)$
TIME

irradiation time to reach the desired microbial photoinactivation

J/cm^2

ENERGY DOSE

ENERGY / UNIT AREA

the necessary energy dose to achieve
inactivation of potential pathogenic
microorganisms

Discovery Space Integralis, Ernesto Gismondi
Photo by Giovanni Gastel



01

INTEGRALIS® is sanitizing light

INTEGRALIS® is a project that associates and integrates the visible and invisible spectral range in an innovative formula capable of regenerating the environmental qualities of the space.

INTEGRALIS® is the combination of light emission spectra able to enhance the efficacy of the sanitizing action.

INTEGRALIS® is a light that can act against pathogenic microorganisms in the environment by just illuminating them.

The INTEGRALIS® selected frequencies of visible light inhibit the development and growth of bacteria, fungi and mold. The selected frequencies of invisible UV light act on pathogenic microorganisms, including viruses.

INTEGRALIS® performs in full respect of people’s safety and without causing damages to the materials normally present in the space, thanks to the intelligences it incorporates.

03

INTEGRALIS® is an open platform

Artemide App enables everybody to have an intelligent management of INTEGRALIS® and allows a personal interaction in private and collective spaces.
INTEGRALIS® is a range of 5 lighting solutions that helps humans to live together more safely, while protecting their health.

- WHITE INTEGRALIS
- WHITE-VIOLET INTEGRALIS
- PURE INTEGRALIS
- VIOLET INTEGRALIS
- UVC INTEGRALIS

02

INTEGRALIS® follows the rhythm of human presence in spaces

INTEGRALIS® works on the concept of “dose”.
It adapts the intensity of the antimicrobial action according to the rhythm of permanence and absence of people in the spaces.

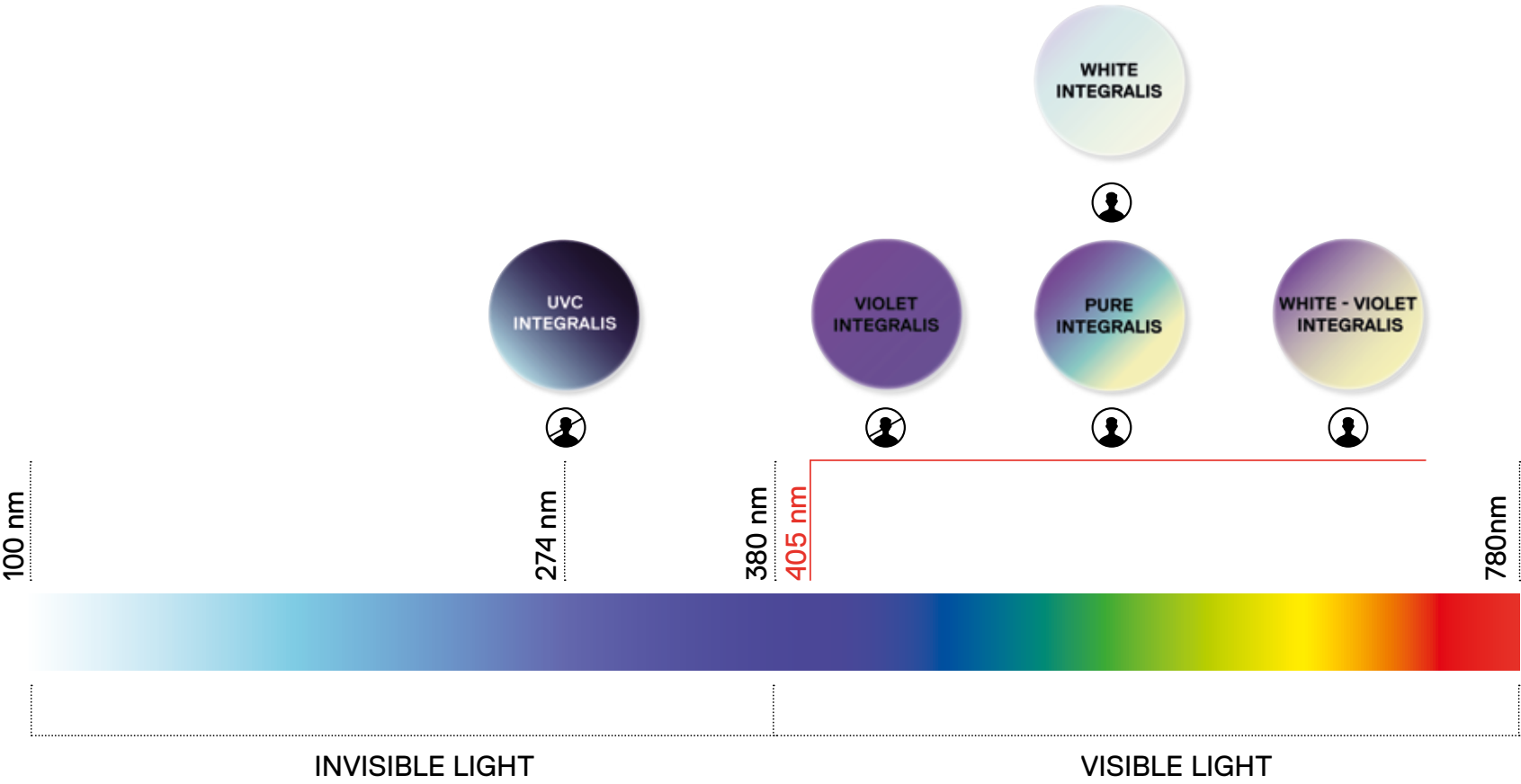
INTEGRALIS® works on the concept of “time”.
A punctual “intermittent” sanitization is activated and deactivated through presence sensors, acting with greater intensity and in less time only in people absence in order to guarantee the safety and the sanitization of the space for each user.

In the same space it is also possible to opt for a non-offensive emission acting as an antimicrobial growth containment thanks to the special spectral component of the patented INTEGRALIS® technology.
This approach offers a perfect functional white light which, at the same time, is active against pathogens.

04

INTEGRALIS® is sustainable design

This innovative technology is combined with the quality, expressiveness and beauty of Artemide design.
INTEGRALIS® is integrated into numerous products of the Artemide collections allowing to improve the safety and environmental quality of human life in different contexts.
INTEGRALIS® is transversal in applications.
It creates a light landscape for both personal and collective, public and private environments, supporting the human activities and following the various people permanences.





DAY MODE
MINIMUM ANTIMICROBIAL DOSE
DURING DAILY ACTIVITIES

Human presence allowed



MICROBIAL GROWTH CONTAINMENT



BACTERIA
FUNGI
MOLD
YEAST



WHITE LIGHT

PUBLIC / COMMON AREAS



HOSPITAL AREAS
HOSPITALITY COMMON AREAS
AIRPORT COMMON AREAS

OFFICE
EDUCATIONAL AREAS
WAITING AREAS
RESTAURANT
RETAIL SPACE

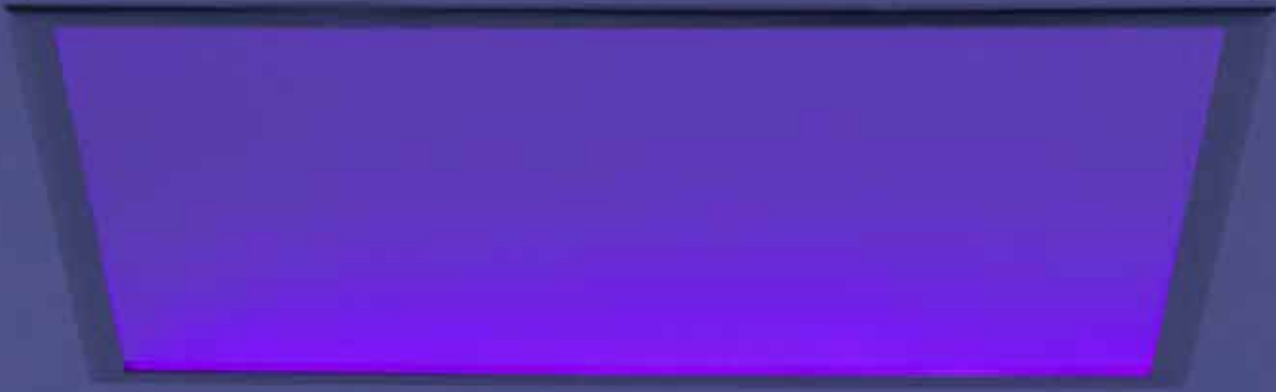
PROLONGED
PERMANENCE



RESIDENTIAL SPACE
PRIVATE OFFICE
HOTEL ROOM
PRIVATE HOUSE



PERSONAL AREAS



NIGHT MODE
MAXIMUM ANTIMICROBIAL DOSE
DURING THE NIGHT OR PEOPLE'S ABSENCE
Human presence NOT allowed



STRONGER MICROBIAL GROWTH CONTROL or ANTIMICROBIAL ACTION



VIRUS
BACTERIA
FUNGI
MOLD
YEAST



VIOLET-BLUE LIGHT

PUBLIC / COMMON AREAS



MEETING ROOM
GYM AREAS

LIFT
RESTROOM
CHANGING ROOM



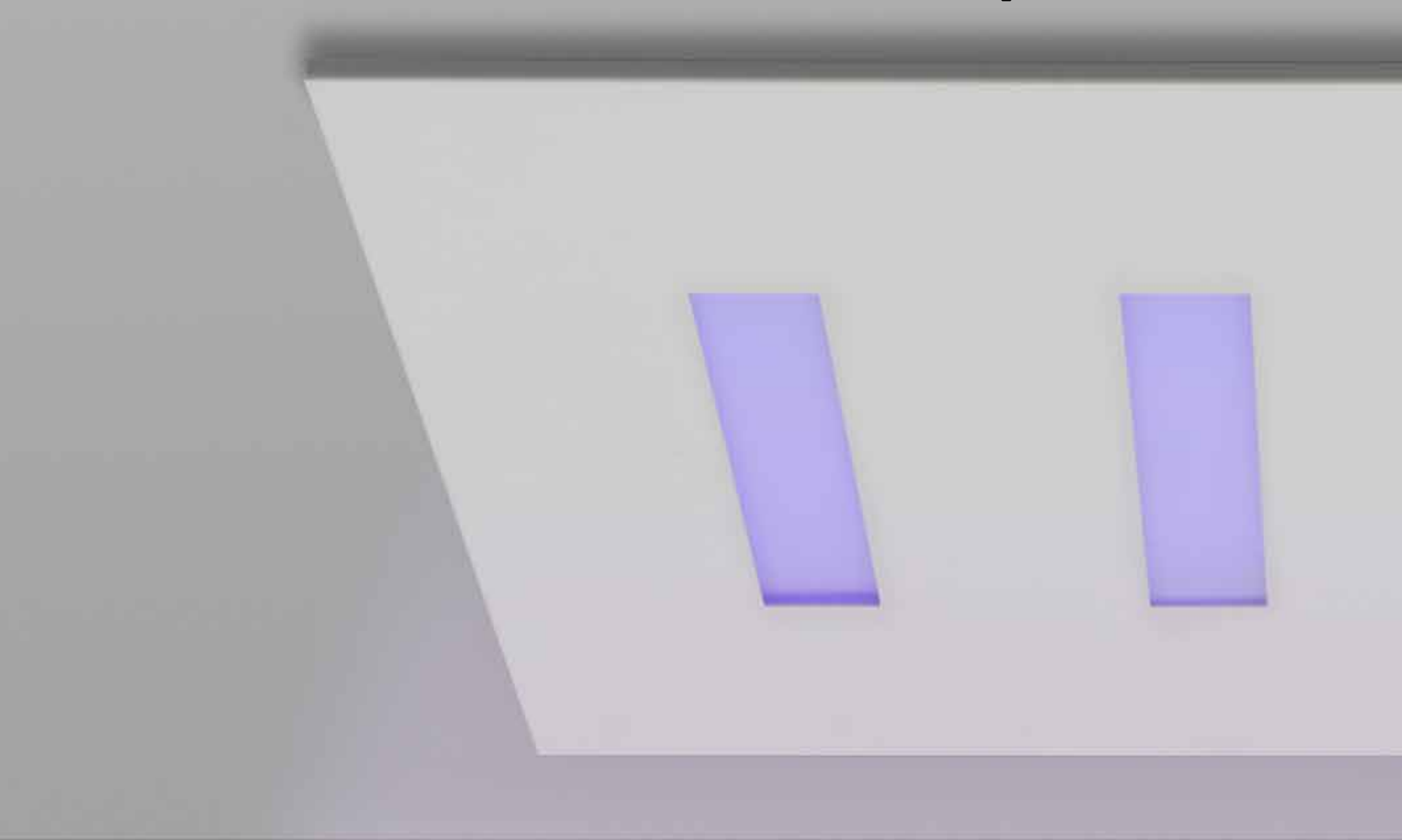
TEMPORARY
PERMANENCE



PERSONAL AREAS

A.39 INTEGRALIS®

Carlotta de Bevilacqua



A.39 600x600 Refractive Integralis Recessed
600 x 600 mm
Total Power: 30W

WHITE INTEGRALIS



A.39 300x1200 Refractive Integralis Recessed
300 x 1200 mm
Total Power: 40W

WHITE INTEGRALIS



A.39 Refractive Integralis Suspension/Ceiling/Recessed
1184*/1482/2368/2960 x 85 x45 mm
Total Power: 40W*

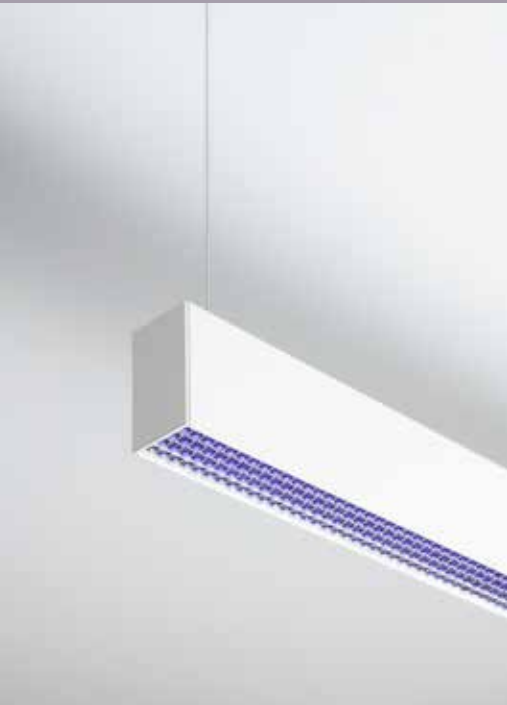
WHITE INTEGRALIS





A.39 Controlled Integralis
Suspension/Ceiling/Recessed
1184*/1482/2368/2960 x 85 x45 mm
Total Power: 35W*

*WHITE INTEGRALIS
PURE INTEGRALIS



A.39 Diffused Integralis
Suspension/Ceiling/Recessed
1184*/1482/2368/2960 x 85 x45 mm
Total Power: 35W*

*WHITE INTEGRALIS
PURE INTEGRALIS



A.39 600x600 Diffused Integralis
Recessed
600 x 600 mm
Total Power: 54W

PURE INTEGRALIS



Body
☐ White
☐ Black
☐ Aluminum

Optics
☐ White
☐ Black



ARTEMIDE
APP



Funivia

Carlotta de Bevilacqua

PATENT OF
INVENTION

01 BEYOND FREEDOM

- SPACE: the cable runs uninterruptedly through space, overcoming the limits of the three dimensions. It draws infrastructural trajectories according to Cartesian geometries.
- TIME: can fit into the space at any time. It is an open system: integrable, incremental and scalable.
- ENERGY AND SIGNAL DISTRIBUTION: from a single power point can run endlessly. It weaves energy plots and binary networks of intelligences without limits of distance but only of power.

03 UNIVERSAL INCLUSIVITY

The light elements are connected to the cable via a “bridge” element, an electricity connection that mechanically fixes the appliance and takes the energy from the cable to power it. The system is inclusive, housing products that already exist; the cable connection module is a universal system that translates energy into an Esperanto of light.

02 NEVERENDING MATERIAL + IMMATERIAL MESHWORK

- The physical network responds to quantities, measure and constraints calculated to ensure the balance of the system. The compensation between forces and loads translates a proportional rhythm between the laws of gravity, static and dynamics.
- The intangible network of intelligences opens a dialogue between its elements and the environment in which they are inserted. The signal comes carried by the nodes of the network itself, giving maximum lightness to the infrastructure.
- The network of environmental qualities generated shifts physical measure into quality of life.

04 SUSTAINABILITY

In Funivia, innovation is a sustainable dialogue that overcomes the limits of all spaces. It is a principle that is sustainable on a production level, in distribution, installation, consumption, use and integration of existing elements, without necessarily having to create additional new products. Funivia breaks a common scheme to existing lighting systems, relegating the rigidity of fixed modules (in space, stock and production) to a thing of the past.

→ FUNIVIA



ARTEMIDE
APP

Energetic and intelligent net

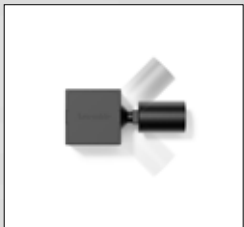


Cable reinforced with aramid fiber
5 x 8 x 10000/20000 mm

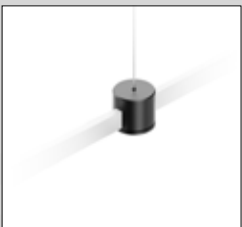
- White
- Black
- Green
- Red
- Blue



Mechanical joints



Cube 60x60
60 x 60 x 60 mm



Single cable hanger
(for long distances)
Ø20 x 15 mm



Double cable hanger
(for long distances)
Ø20 x 30 mm



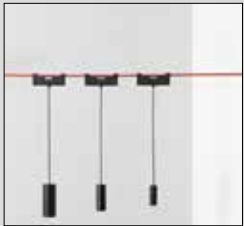
Change direction
Ø20 x 30 mm

● Black

Multiple light performances



Vector 30
Vector 30 Pendant
(6° - 24° - 40°)
Ø30 x 77 mm
Total Power: 7W



Vector 40
Vector 40 Pendant
(13° - 20° - 28°)
Ø40 x 103 mm
Total Power: 10W



Diffused S
Diffused S Pendant
295 x 25 x 17 mm
Total Power: 11,7W



Diffused M
Diffused M Pendant
440 x 25 x 17 mm
Total Power: 15,5W



Sharping 8 LED
Sharping 8 LED Pendant
(24° - 62°)
295 x 25 x 17 mm
Total Power: 14W



Sharping 12 LED
Sharping 12 LED Pendant
(24° - 62°)
440 x 25 x 17 mm
Total Power: 19W

→ FUNIVIA

- White
- Black
- Green
- Red
- Blue



La Linea

Suspended back bone

BIG

PATENT OF INVENTION

La Linea 2500

Ø40 x 2500 mm

Total Power: 15W/mt

IP65

La Linea 5000

Ø40 x 5000 mm

Total Power: 15W/mt

IP65

● White

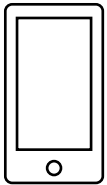
La Linea is a basic principle that generates an open system and a comprehensive relation with space and humans.

It turns light into an ideal fixture for outdoor spaces, architectures, parks, or public and urban areas to requalify common spaces, create social and engaging landscapes and promote relations between people and their surroundings.

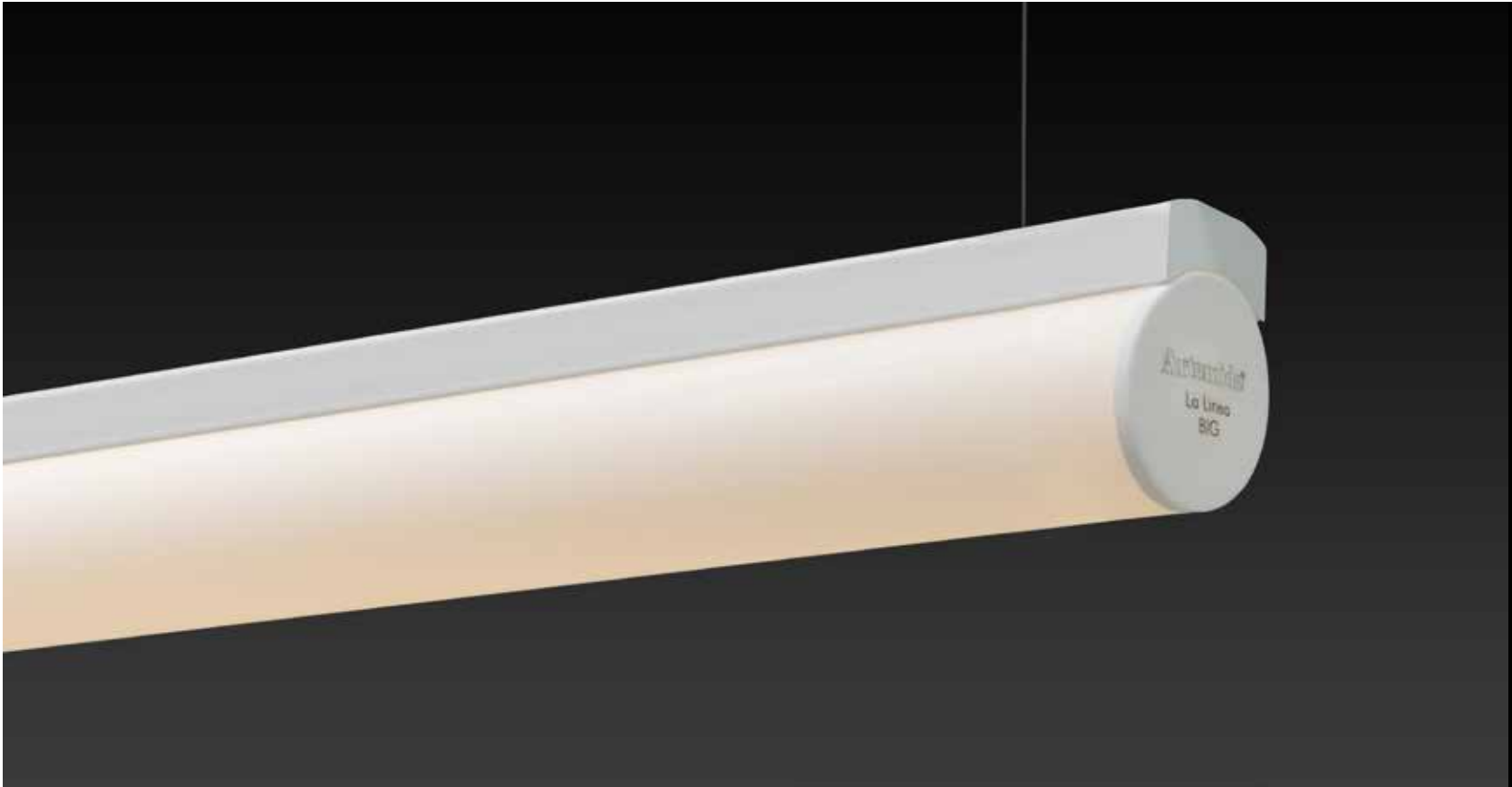
It easily fits into indoor and outdoor spaces by leveraging on an unprecedented combination of factors, including quality of light, IP protection grade, flexibility, modularity. BIG's idea is once again transposed, thanks to the know-how of Artemide, into a product that looks basic but it is rich of technological innovation.

Today, new installation possibilities make it an increasingly transversal solution. With an aluminum back bone is possible to suspend La Linea modules creating linear or curved geometries in custom composition.





ARTEMIDE
APP



La Linea recessed

With the new recessed accessories La Linea can be suspended from the extremities and can freely define the softly curving geometries during installation in the space.



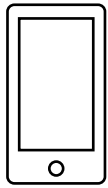
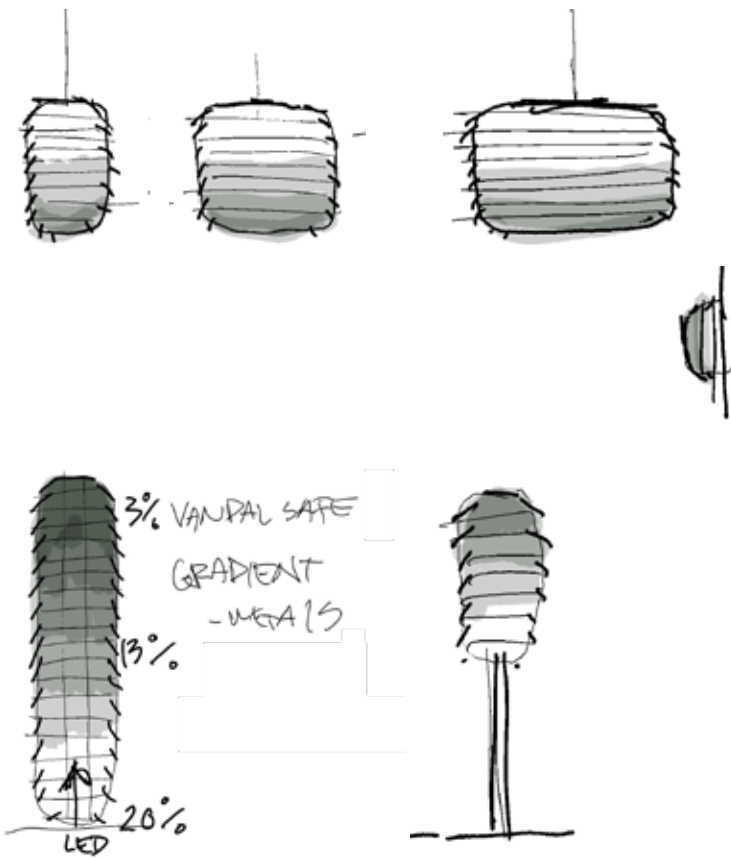
Slicing BIG

PATENT OF INVENTION

Slicing breaks down the iconic Gople silhouette and scale into different dimensions and proportions to bring light indoor and outdoor, by interpreting the relationship between spaces and nature.

Starting from the principles of production, energy sustainability and respect for the natural environment in which they are inserted, a series of overlapping slats interact with the light and define the body of three suspension lights two floor and one wall/ceiling elements.

Slicing can accompany us as we walk about, it helps us to read the surrounding landscape in the movement, it stages the space and creates moments of rest, sharing and meeting, resulting in an experience on a human scale.



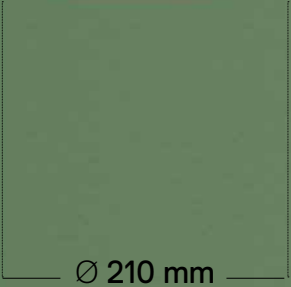
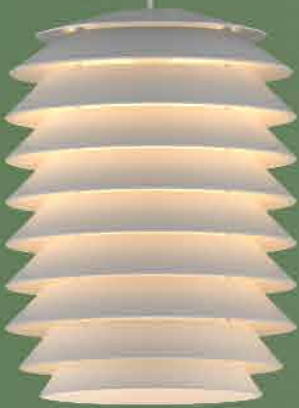
ARTEMIDE
APP



→ SLICING



Mechanical and Optical Intelligence

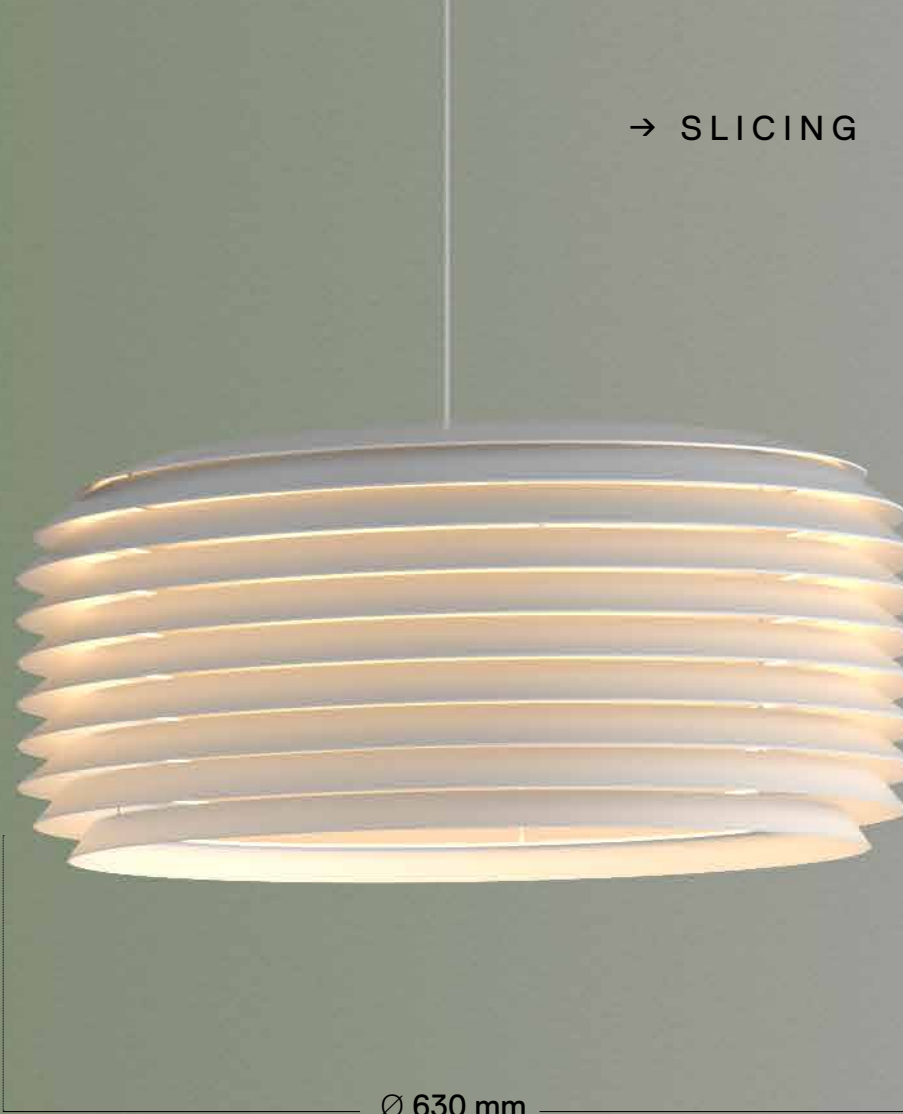


Slicing Bollard
Ø210 x 850 mm
Total Power: 20W
IP65

Slicing Stem
Ø210 x 850 mm
Total Power: 20W
IP65

Slicing Wall/Ceiling
Ø210 x 129 mm
Total Power: 14W
IP65

→ SLICING



Slicing Suspension 210
Ø210 x 275 mm
Total Power: 14W
IP65

○ Aluminum

Slicing Suspension 420
Ø420 x 288 mm
Total Power: 28W
IP65

Slicing Suspension 630
Ø630 x 288 mm
Total Power: 28W
IP65

Sustainable Flat Pack and Installation



Indoor



Outdoor



Alphabet of Light Outdoor BIG



ARTEMIDE
APP



"Expanding on the Alphabet of Light family by contributing a strong presence for the outdoor realm, the AoL outdoor circle light offers subtle yet surprising illumination along paths and roads of parks and forests.

The Alphabet of Light outdoor circle light honours the beauty of the tree by endowing it with a generous halo."

BIG

Alphabet of Light Outdoor
Ø1480 x 40 mm
Total Power: 63W
IP65

● Black

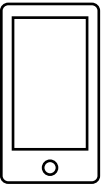


Nottola

Alexander Bellman



Nottola
Ø556 x 862/1362 mm
Total Power: 20W
IP65
● Brass



ARTEMIDE
APP



Nottola is an outdoor suspension lamp, thin and elegant, that offers diffused lighting and projects a subtle play of shadows into the environment. A metal structure encloses the diffusing lighting body and through a few simple touches, defines a volume “without substance”. It is a modern lantern that adapts perfectly to contemporary architecture but will also fit unobtrusively into the oldest of spaces, with full respect for the stylistic characteristics of the architecture.



A photograph of a park at dusk. In the foreground, a gravel path leads into a grassy area. Several tall, thin, yellow ground lights are placed along the path, casting a warm glow. In the background, there are several large, dark trees with dense foliage. The sky is a mix of blue and orange, indicating sunset or sunrise.

Needoo Davide Oppizzi

"Needoo respects the alchemy of night and nature. It significantly reduces light pollution and the impact on flora and fauna so that it does not interfere with their photobiological cycle. It is a silent light that becomes an integral part of the delicate balance of biodiversity by supporting it."

Davide Oppizzi

Needoo
Ø 300 x 3400 mm
Total Power: 10W
IP65

Needoo Pole
Ø 300 x 2600 mm
Total Power: 10W
IP65

Needoo Bollard
Ø 300 x 1000 mm
Total Power: 10W
IP65

Needoo Nest
Ø 170 x 3400 mm

● Green

● Rust



ARTEMIDE
APP

An entire family with different lighting performances



Single light emissions

Light Blade
Asymmetric
Rotosymmetric



Double light emissions

Light Blade + Light Blade
Asymmetric + Asymmetric
Rotosymmetric + Rotosymmetric
Asymmetric + Light Blade

Needoo is a new project that puts the environment first. Comprised of a bollard and three different poles, it offers perfectly controlled light that respects nature by illuminating only what is strictly necessary. Perched atop the pole there is a shelter for birds. The light head is positioned below the nest and consists of a plate which screens the light and forms a surface upon which small animals can rest.

It combines an approach that is mindful of the perceptive needs of humans and animals and that speaks of respecting and sharing spaces. Birds must be able to navigate their way using their natural reference points which are the night sky with the stars and the moon.

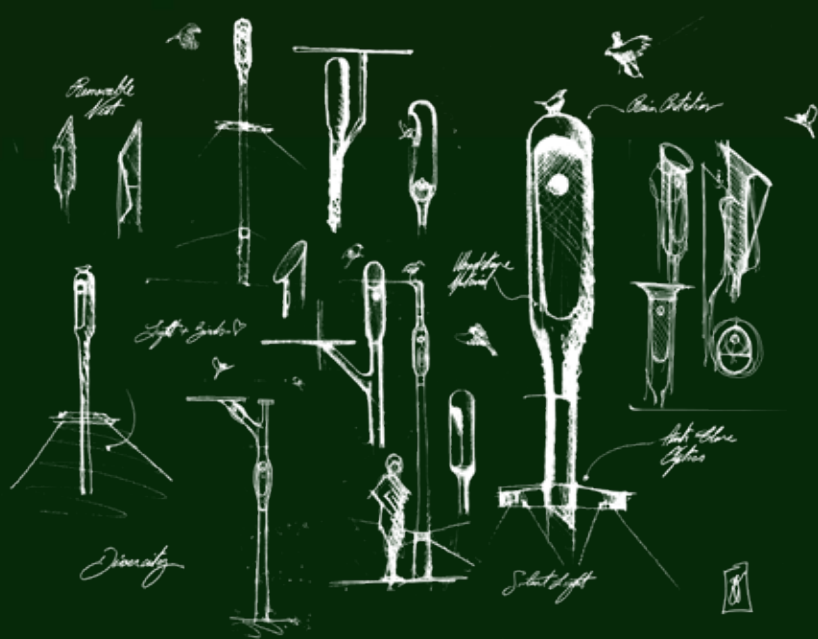
The controlled light of Needoo does not interfere with this perception and does not dazzle them.

The carefully designed optics, their positioning, the quality of light and its control via integrated sensors help to ensure harmonious co-existence of humans and nature, respecting the circadian rhythms of each species and a positive energy balance.

The interaction between light, humans and nature is guided by smart programming that calibrate light intensity based on presence, employing a gradual progression that creates no unsettling contrasts.



Needoo and Biodiversity



Needoo is not just an outdoor lighting system but above all a place ready to embrace biodiversity.

Needoo is the perfect system for helping animals in our contemporary spaces, offering suitable shelter in parks to help repopulate urban areas with different species, enriching our quality of life. As indicated by numerous studies, the lack of nesting spaces is one cause of the loss of biodiversity. Needoo aims to be a small but practical step, an action to help reverse this worrying trend.

Needoo project opened a collaboration with Birdlife Suisse on all aspects linked to the different species' behaviour.



Artemide

Artemide
the Human and Responsible
Light