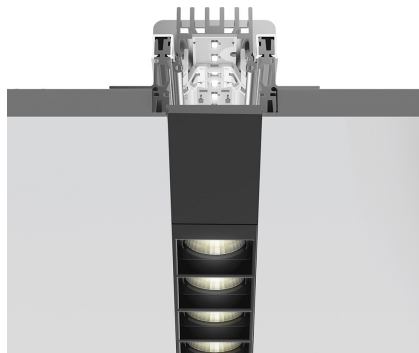
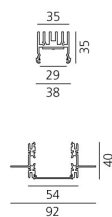


# A.39 Recessed Sharping Emission - Structural Module Trimless - 1184mm - 20° - 4000K - Undimmable/Dimmable DALI - 3x4 Optics

Carlotta de Bevilacqua



IP 20  Regulable: 



## LUMINARIA

- Potencia (W): **33W**
- Flujo Luminoso (lm): **2646lm**
- CCT: **4000K**
- Efficiency: **76%**
- Efficacy: **80.19lm/W**
- CRI: **90**
- Dimmable Typology: **Dali**

## Notas

Louvers supplied separately.  
Driver 900mA SELV supplied separately.  
APP interface supplied separately.  
The APP driver can not be controlled by DALI dimming system and viceversa.

## ESPECIFICACIONES

Optimized version in line applications with wide lenghts. Diffusing direct and direct + indirect emission. Recessed trim, trimless, suspension and ceiling versions. Dimmable and non dimmable in two CCT 3000K and 4000K versions.

**CÓDIGO PRODUCTO: BH25101**

## CARACTERÍSTICAS

- Código del artículo: **BH25101**
- Instalación: **Empotrado**
- Serie: **Architectural Indoor**
- Emisión: **Direct**
- diseño: **Carlotta de Bevilacqua**

## DIMENSIONES

- Longitud: **cm 118**
- Ancho: **cm 5.4**
- Profundidad empotrado: **cm 4**

## FUENTES DE LUZ INCLUIDAS

- Categoría: **Led**
- Numero: **1**
- Potencia (W): **33W**
- Temperatura de Color (K): **4000K**
- Color Tolerance: **MacAdam 2SDCM**
- Service Life: **L90 (20K) 118000h**

ACCESORIOS



Louvre - 1184mm 3x4 optics white  
AE41001



Louvre - 1184mm 3x4 optics black  
AE41004



Driver 45W - 900mA - 220-240V - Undimmable  
DV1023



Sharpring wall grazer lens Kit (4pcs) - 26°x70°  
elliptical lenses kit. It has to be used on top of S  
20° reflectors to get an elliptical beam (greter  
axis along the module lenght). It contains 4  
lenses.  
AF06000



Driver 45W - 900mA - 220-240V - Undimmable  
DV1025



Driver - 220-240V - APP  
DV1053APP



A.39 Recessed - Formwork - End Cap (2 pcs)  
AT09301