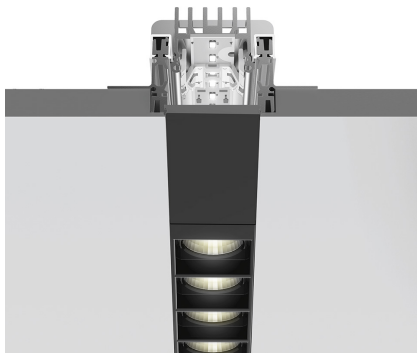
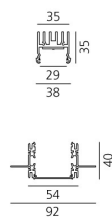


A.39 Recessed Sharping Emission - Structural Module Trimless - 1184mm - 36° - 3000K - Undimmable/Dimmable DALI - 3x4 Optics

Carlotta de Bevilacqua



IP 20  Regulable: 



LUMINARIA

- Potencia (W): **33W**
- Flujo Luminoso (lm): **2314lm**
- CCT: **3000K**
- Efficiency: **71%**
- Efficacy: **70.11lm/W**
- CRI: **90**
- Dimmable Typology: **Dali**

Notas

Louvers supplied separately.
Driver 900mA SELV supplied separately.
APP interface supplied separately.
The APP driver can not be controlled by DALI dimming system and viceversa.

ESPECIFICACIONES

Optimized version in line applications with wide lenghts. Diffusing direct and direct + indirect emission. Recessed trim, trimless, suspension and ceiling versions. Dimmable and non dimmable in two CCT 3000K and 4000K versions.

CÓDIGO PRODUCTO: BH25201

CARACTERÍSTICAS

- Código del artículo: **BH25201**
- Instalación: **Empotrado**
- Serie: **Architectural Indoor**
- Emisión: **Direct**
- diseño: **Carlotta de Bevilacqua**

DIMENSIONES

- Longitud: **cm 118**
- Ancho: **cm 5.4**
- Profundidad empotrado: **cm 4**

FUENTES DE LUZ INCLUIDAS

- Categoría: **Led**
- Numero: **1**
- Potencia (W): **33W**
- Temperatura de Color (K): **3000K**
- Color Tolerance: **MacAdam 2SDCM**
- Service Life: **L90 (20K) 118000h**

ACCESORIOS



Louvre - 1184mm 3x4 optics white
AE41001



Louvre - 1184mm 3x4 optics black
AE41004



Driver 45W - 900mA - 220-240V - Undimmable
DV1023



Driver 45W - 900mA - 220-240V - Undimmable
DV1025



Driver - 220-240V - APP
DV1053APP



A.39 Recessed - Formwork - End Cap (2 pcs)
AT09301