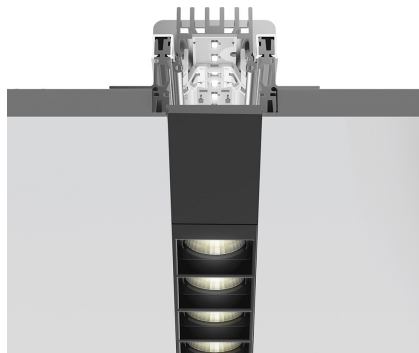
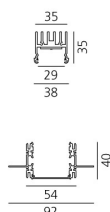


# A.39 Recessed Sharping Emission - Structural Module Trimless - 2368mm - 36° - 3000K - Undimmable/Dimmable DALI - 4x4 Optics

Carlotta de Bevilacqua



IP 20  Regulable: 



## LUMINARIA

- Potencia (W): **44W**
- Flujo Luminoso (lm): **3085lm**
- CCT: **3000K**
- Efficiency: **71%**
- Efficacy: **70.11lm/W**
- CRI: **90**
- Dimmable Typology: **Dali**

## Notas

Louvers supplied separately.  
Driver 900mA SELV supplied separately.  
APP interface supplied separately.  
The APP driver can not be controlled by DALI dimming system and viceversa.

## ESPECIFICACIONES

Optimized version in line applications with wide lenghts. Diffusing direct and direct + indirect emission. Recessed trim, trimless, suspension and ceiling versions. Dimmable and non dimmable in two CCT 3000K and 4000K versions.

**CÓDIGO PRODUCTO: BH26201**

## CARACTERÍSTICAS

- Código del artículo: **BH26201**
- Instalación: **Empotrado**
- Serie: **Architectural Indoor**
- Emisión: **Direct**
- diseño: **Carlotta de Bevilacqua**

## DIMENSIONES

- Longitud: **cm 237**
- Ancho: **cm 5.4**
- Profundidad empotrado: **cm 4**

## FUENTES DE LUZ INCLUIDAS

- Categoría: **Led**
- Numero: **1**
- Potencia (W): **44W**
- Temperatura de Color (K): **3000K**
- Color Tolerance: **MacAdam 2SDCM**
- Service Life: **L90 (20K) 118000h**

ACCESORIOS



Louvre - 2368mm 4x4 optics white  
AE42001



Louvre - 2368mm 4x4 optics black  
AE42004



Driver - 220-240V - APP  
DV1053APP



Driver 25W - 900mA - 220-240V - DALI  
DV1026



Driver 60W - 900mA - 220-240V - DALI  
DV1028



A.39 Recessed - Formwork - End Cap (2 pcs)  
AT09301