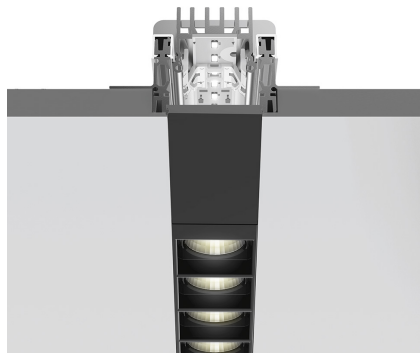
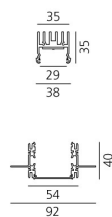


A.39 Recessed Sharping Emission - Structural Module Trimless - 2368mm - 52° - 3000K - Undimmable/Dimmable DALI - 6x4 Optics

Carlotta de Bevilacqua



IP 20  Regulable: 



LUMINARIA

- Potencia (W): **66W**
- Flujo Luminoso (lm): **4792lm**
- CCT: **3000K**
- Efficiency: **73%**
- Efficacy: **72.6lm/W**
- CRI: **90**
- Dimmable Typology: **Dali**

Notas

Louvers supplied separately.
Driver 900mA SELV supplied separately.
APP interface supplied separately.
The APP driver can not be controlled by DALI dimming system and viceversa.
Order 2 drivers to power this module.

ESPECIFICACIONES

Optimized version in line applications with wide lenghts. Diffusing direct and direct + indirect emission. Recessed trim, trimless, suspension and ceiling versions. Dimmable and non dimmable in two CCT 3000K and 4000K versions.

CÓDIGO PRODUCTO: BH27401

CARACTERÍSTICAS

- Código del artículo: **BH27401**
- Instalación: **Empotrado**
- Serie: **Architectural Indoor**
- Emisión: **Direct**
- diseño: **Carlotta de Bevilacqua**

DIMENSIONES

- Longitud: **cm 237**
- Ancho: **cm 5.4**
- Profundidad empotrado: **cm 4**

FUENTES DE LUZ INCLUIDAS

- Categoría: **Led**
- Numero: **1**
- Potencia (W): **66W**
- Temperatura de Color (K): **3000K**
- Color Tolerance: **MacAdam 2SDCM**
- Service Life: **L90 (20K) 118000h**

ACCESORIOS



Louvre - 2368mm 6x4 optics - white
AE43001



Louvre - 2368mm 6x4 optics black
AE43004



Driver - 220-240V - APP
DV1053APP



Driver 45W - 900mA - 220-240V - DALI
DV1027



Driver 45W - 900mA - 220-240V - DALIq
DV1029



A.39 Recessed - Formwork - End Cap (2 pcs)
AT09301