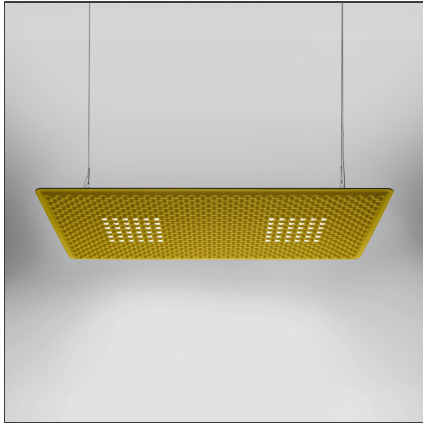

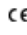



# Eggboard Matrix - 1600x800 - Direct + Indirect - 4000K - Green



IP20   Dimmerable: 

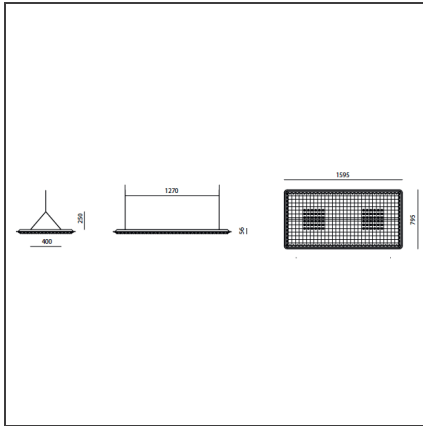
## DESIGN BY

Progetto CMR - Giacobone & Roj

## DESCRIPTION

Suspension appliance with sound-absorbing properties ensured by a peculiar sinusoidal cross-section design of the lower surface and the use of a sound-absorbing material. Acoustic efficiency is ensured within a limited space by positioning at approximately one metre above the head of the speaker and listener. Direct emission: a board with a high number of low-voltage LEDs with rotosymmetrical reflectors ensures maximum lighting comfort. Colour temperature 3000K or 4000 K. Complies with the norms on office activities that involve the use of video-terminals (UGR)

## TECHNICAL DRAWINGS



## FEATURES

<b>Article Code:</b>	M3101N51	<b>Series:</b>	Indoor
<b>Colour:</b>	Green		
<b>Installation:</b>	Suspension		

## DIMENSIONS

<b>Length:</b>	cm 159.5
<b>Width:</b>	cm 79.5
<b>Height:</b>	cm 25
<b>Weight:</b>	kg 17.7

## INCLUDED SOURCES

<b>Category:</b>	LED	<b>Color temperature (K):</b>	4000K
<b>Number:</b>	1	<b>Color Tolerance:</b>	MacAdam 4SDCM
<b>Watt:</b>	65W	<b>CRI:</b>	=80(min.)
<b>Delivered lumens output (lm):</b>	8876lm	<b>Efficacy:</b>	131lm/W
<b>Type:</b>	0	<b>Service Life:</b>	L70(6K)>50000h
<b>Class:</b>	A		

## LUMINAIRE

<b>Watt:</b>	75W	<b>Delivered lumens output (lm):</b>	6723lm
		<b>CCT:</b>	4000K
		<b>Efficiency:</b>	74%
		<b>Efficacy:</b>	89.64lm/W
		<b>CRI:</b>	90
		<b>Dimmable Typology:</b>	Dali