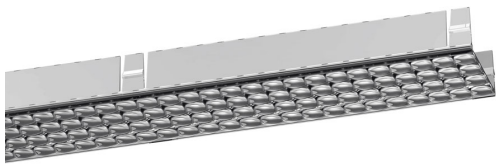


Algoritmo Controlled-Prismoptic Emission - Wired gear plates white LED Direct emission - 34W 1184mm 3000K Non dimmable + Controlled Emission Optic

Carlotta de Bevilacqua
Paola di Arianello



DESCRIPTION

A modular system for ceiling or wall-recessed installation, to be installed as a continuous line or with angles, composed of structural modules in extruded aluminium, of pre-wired gear plates with through-wiring and quick-connection system of optics systems and components for connecting, fixing, joining or finishing the system. The prewired LED plates were designed for diffused emission, wall washer light, prismoptic or controlled emission, for projectors integration (PAD or Cube 37), for 3 phase track alimentation. Complies with standard EN60598-1 and any other specific standard.



LUMINAIRE

- Watt: **34W**
- Flux Lumineux (lm): **1569lm**
- CCT: **3000K**
- Efficiency: **36%**
- Efficacy: **46.13lm/W**
- CRI: **80**

Remarques

Câblage passant intégré MV.

CARACTÉRISTIQUES

- Code Produit : **M2882W00 + M186700**
- Installation:
EncastréAppliqueSuspensionPlafonnier
- Séries: **Architectural Indoor**
- dessiné par: **Carlotta de Bevilacqua, Paola di Arianello**

DIMENSIONS

- Longueur : **1180 mm**
- Poids: **kg 1,1**

SOURCES INCLUES

- Catégorie: **Led**
- Nombre: **1**
- Watt: **29 W**
- Flux Lumineux (lm): **3361 lm**
- Température de Couleur (K): **3000 K**
- CRI: **=80 (typ.)**
- Color Tolerance: **MacAdam 4SDCM**
- Efficacy: **116 lm/W**
- Service Life: **L70(9K) > 50000h**

ACCESSOIRES



Electronic power supply. IP67. Input voltage range: 90-264VAC / 47-63Hz. Output voltage: 48VDC. Protection against overcurrent, overvoltage, short-circuit and overtemperature, with automatic restart. - 240W. For feeding up to a total 225W. 244x68x39mm. M075100



Electrical connector (only for RGB LED) to couple wall-surface or floor-recessed LED Algoritmo System modules, powered through the same electrical circuit. M221900



Supply Kit. Allows for connection of the mains to the first pre-wired gear plate of the initial module. To be used only with recessed and surface installation. - MV (7xmax 1,5 mm²) To power white LED plates and accent modules. M073240



Supplementary through-wiring (optional). To be used in mixed configuration with LV and MV pre-cabled gear trays. - MV 1184mm. M198700



Control Interface. Form managing groups of Algoritmo System LED RGB and/or white LED/RGB Algoritmo Floor lighting units. Integrated sequencer for stand-alone operation with predefined color sequence. Possibility of master-slave configuration. DALI DMX light management systems are not included. - Compatible DALI 310X168X90 mm. IP67 M077000



Control Interface. Form managing groups of Algoritmo System LED RGB and/or white LED/RGB Algoritmo Floor lighting units. Integrated sequencer for stand-alone operation with predefined color sequence. Possibility of master-slave configuration. DALI DMX light management systems are not included. - Compatible DALI. Suitable for DIN rail mounting. 106x90x70 mm. IP20 M077200



Supplementary through-wiring (optional). To be used in mixed configuration with LV and MV pre-cabled gear trays. - LV 1184mm. M198800



Screen controlled emission - 1184mm (4 pcs) M186700



Electronic power supply. IP67. Input voltage range: 90-264VAC / 47-63Hz. Output voltage: 48VDC. Protection against overcurrent, overvoltage, short-circuit and overtemperature, with automatic restart. - 320W. For feeding up to a total 300W. 252x90x44mm. M076100



Electronic power supply. IP67. Input voltage range: 90-264VAC / 47-63Hz. Output voltage: 48VDC. Protection against overcurrent, overvoltage, short-circuit and overtemperature, with automatic restart. 100W. For feeding up to a total 90W. 220x68x38mm. M075000

NO IMAGE AVAILABLE

Movement detector - 296mm DALI M2981



Control Interface. Form managing groups of Algoritmo System LED RGB and/or white LED/RGB Algoritmo Floor lighting units. Integrated sequencer for stand-alone operation with predefined color sequence. Possibility of master-slave configuration. DALI DMX light management systems are not included. - Compatible DALI or DMX 310X168X90 mm. IP67 M077100



Control Interface. Form managing groups of Algoritmo System LED RGB and/or white LED/RGB Algoritmo Floor lighting units. Integrated sequencer for stand-alone operation with predefined color sequence. Possibility of master-slave configuration. DALI DMX light management systems are not included. - Compatible DALI or DMX. Suitable for DIN rail mounting. 106x90x70 mm. IP20 M077300



Supply Kit. Allows for connection of the mains to the first pre-wired gear plate of the initial module. To be used only with recessed and surface installation. - LV (3xmax 1,5 mm²) To power LED RGB trays. M073230

