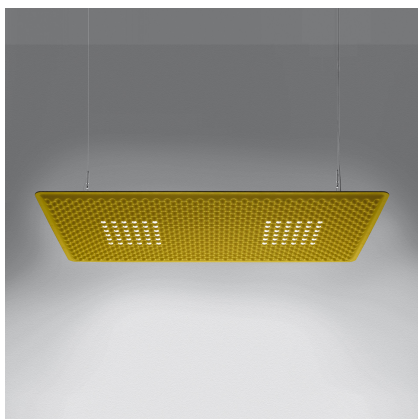
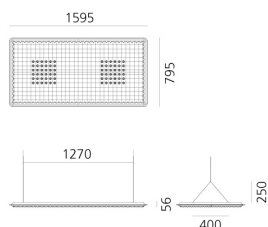


Eggboard Matrix - 1600x800 - Direct - 3000K - Green

Progetto CMR - Giacobone & Roj



IP20   Regulable: 



LUMINARIA

- Potencia (W): **31W**
- Flujo Luminoso (lm): **2402lm**
- CCT: **3000K**
- Efficiency: **71%**
- Efficacy: **77.48lm/W**
- CRI: **90**
- Dimmable Typology: **Dali**

Notas

UGR<19

ESPECIFICACIONES

Suspension appliance with sound-absorbing properties ensured by a peculiar sinusoidal cross-section design of the lower surface and the use of a sound-absorbing material. Acoustic efficiency is ensured within a limited space by positioning at approximately one metre above the head of the speaker and listener. Direct emission: a board with a high number of low-voltage LEDs with rotosymmetrical reflectors ensures maximum lighting comfort. Colour temperature 3000K or 4000 K. Complies with the norms on office activities that involve the use of video-terminals (UGR)

CÓDIGO PRODUCTO: M3100W51

CARACTERÍSTICAS

- Código del artículo: **M3100W51**
- Color: **Green**
- Instalación: **Suspensión**
- Serie: **Architectural Indoor**
- diseño: **Progetto CMR - Giacobone & Roj**

DIMENSIONES

- Longitud: **cm 159.5**
- Ancho: **cm 79.5**
- Altura: **cm 25**
- Peso: **cm 16.6**

FUENTES DE LUZ INCLUIDAS

- Categoría: **Led**
- Numero: **1**
- Potencia (W): **16W**
- Flujo Luminoso (lm): **2108lm**
- Temperatura de Color (K): **3000K**
- CRI: **=80(min.)**
- Color Tolerance: **MacAdam 4SDCM**
- Efficacy: **131lm/W**
- Service Life: **L70(6K)>50000h**