



# Kitzig Design Studios, The Flat

➤ Düsseldorf, Germany

➤ Jahr / 2023

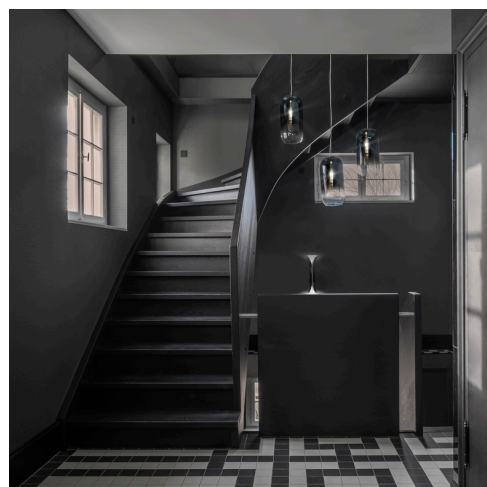
**Kategorie** / Office / Residential

**Autor** / Kitzig Design Studios

**Fotos** / Marvin Schwienheer



A.39 Sharping - Carlotta de Bevilacqua



Gople - Bjarke Ingels Group



Vector Track - Carlotta de Bevilacqua



nh Floor - Neri & Hu | Vector Ceiling - Carlotta de Bevilacqua



nh S4 Circulaire - Neri & Hu



The former residence of the British Consul General in the first line of the Rhine is the new headquarters of Kitzig Design Studios. Founder and managing director, Olaf Kitzig, had acquired the house in 2021. Since then, the building, consisting of brickwork with natural stone elements extending over three floors, has been restored with great care and attention to detail. Today, heritage-protected components harmonize with new design and modern technology. In addition to office and living space, the more than 1.000 m<sup>2</sup> are primarily showroom.



Tolomeo & Tolomeo Faretto - Michele De Lucchi



La Linea - Bjarke Ingels Group



Alphabet of Light Linear - Bjarke Ingels Group | Demetra - Naoto Fukasawa



Eggboard Matrix - Progetto CMR