



Helgoland

Carlotta de Bevilacqua

Artemide[®]

helgoland

Helgoland

Carlotta de Bevilacqua
2023

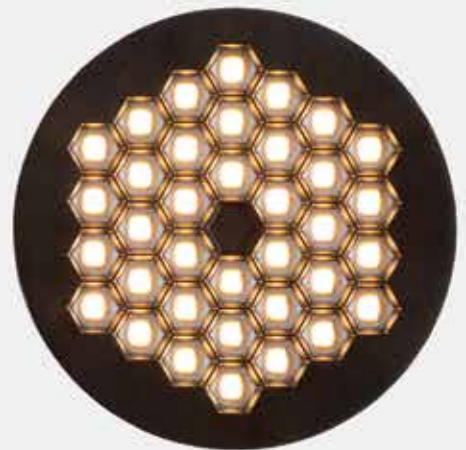
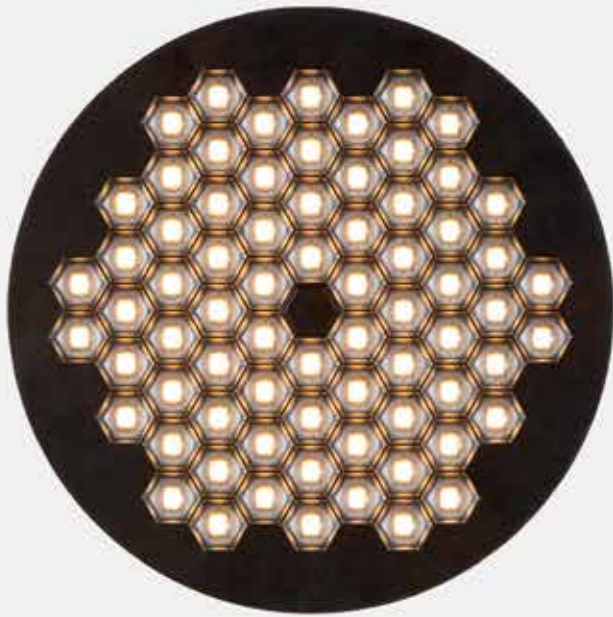
Helgoland is an efficient and perfectly controlled light principle that applies to an incremental, compact and optimised geometry, capable of casting good light into any space. The patented technology of the refractive optics is miniaturised and developed according to an hexagonal mesh that maximises the density of the luminous flux emitted. The hexagonal geometry makes it possible to place the elements side by side without wasting space, according to the shape of a honeycomb.

This model is inspired by nature, by the intelligence of bees. The geometry enables free, linear or radial-centric growth just as in these first versions of Helgoland.

PATENT OF INVENTION: OPTICS



Artemide
App

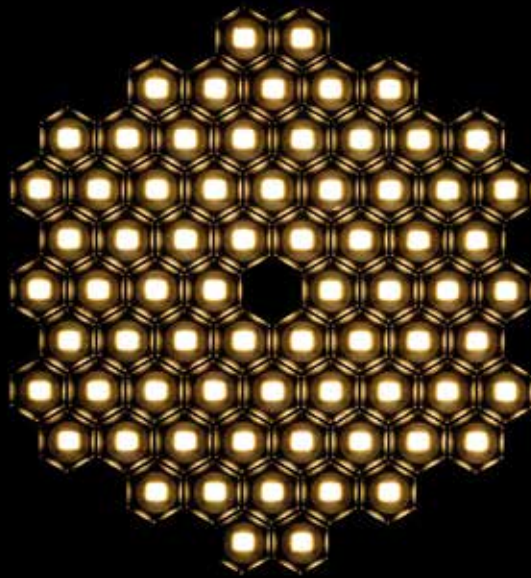


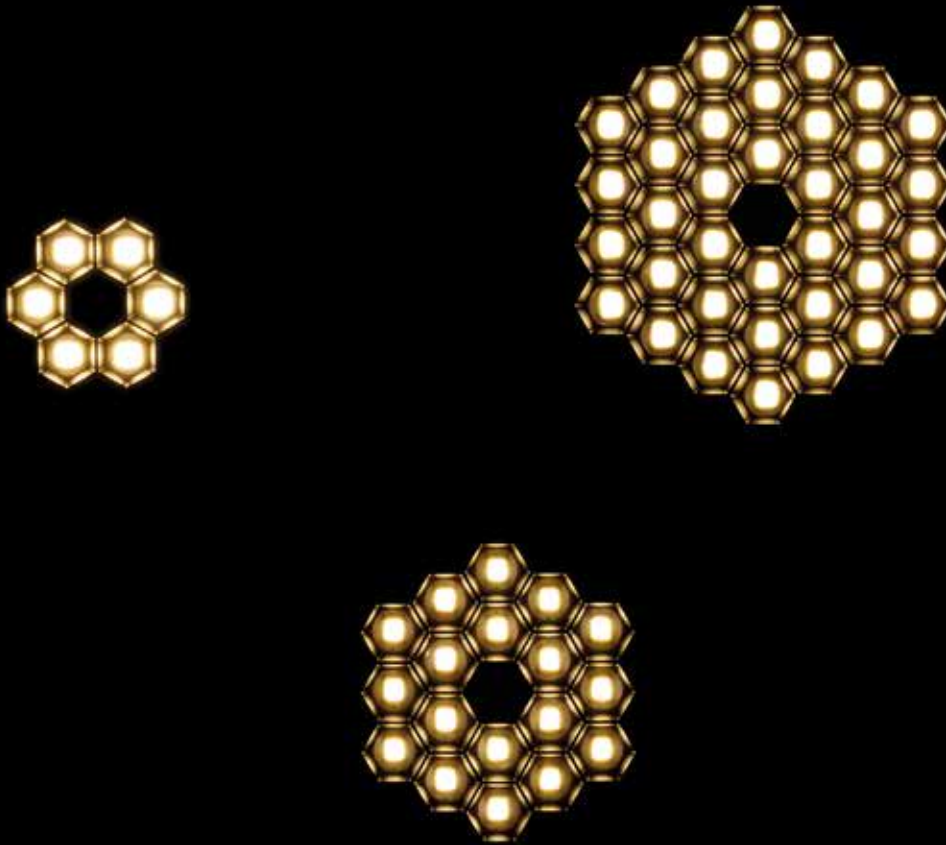
Scale 1:2

For further information on Helgoland
visit artemide.com

Helgoland

Incremental optical geometry





Esarefractive lens

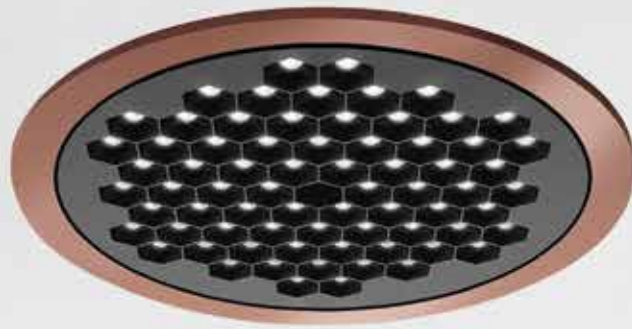
Maximized flux density per unit area

Scalable platform

Sustainable principles

Incremental principle

Multiple features

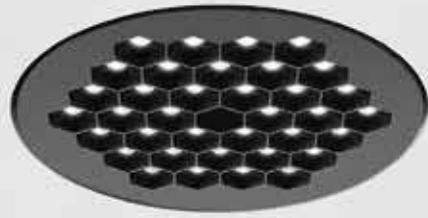


Three different versions

Four different sizes

Five colour finishes

A wide range of installation types



Installation accessories



Trimless



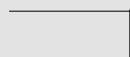
Trim



Light engine



Magnetic fixing



12,5 mm



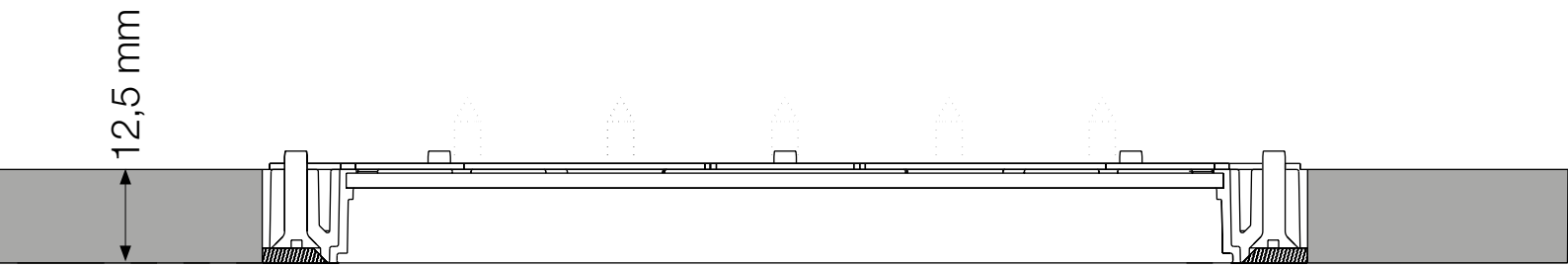
SMD Remote driver



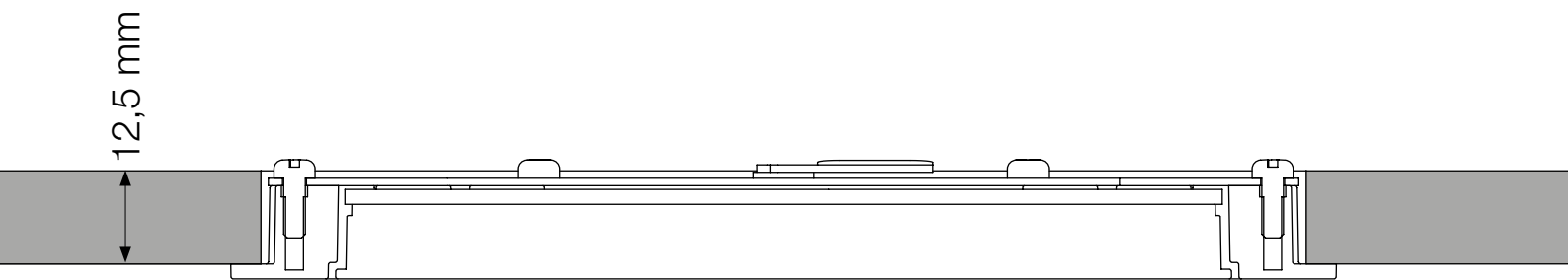
SMD Built-in driver

Collaborative Units

Helgoland has an optimised construction also with respect to the structure of the various versions. The light engine is in fact an element which can be combined through an easy magnetic fixing system with various accessories: for recessed version, with or without a frame, or ceiling installation, with or without driver, up to an adjustable arm that connects it to other systems and tracks in the Artemide collection.



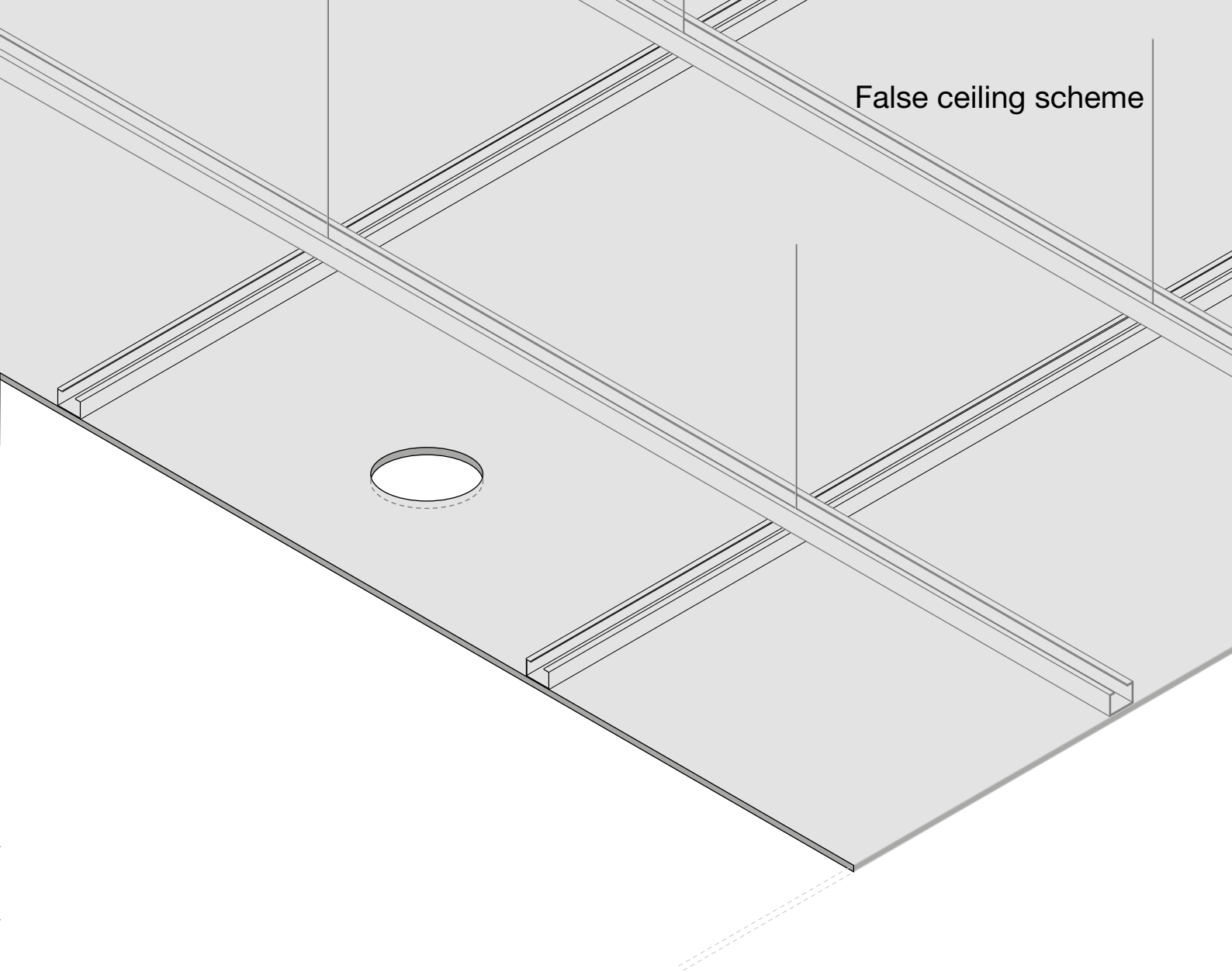
Trimless



Trim

h 12,5 mm for Recessed version

The downlight can be integrated into the standard plasterboard thickness without interfering with the structural warping.



False ceiling scheme

Reduce to innovate

Thanks to its optimized structure and minimal dimensions, Helgoland recessed adapts to any environment at any time.

Furthermore, its thickness of 12,5 mm allows it to be integrated into the standard thickness of the plasterboard without interfering with the structural framework.

Affirming the spatial freedom of each project, Helgoland is the appropriate lighting solution for applications where the reduced depth above the plasterboard ceiling represents an architectural constraint.

Application fields

Corridor - Helgoland 90 Recessed trim WF 38°





Workplaces
Desks area - Helgoland 160 Recessed trim XF 60°



Hospitality

Helgoland 120 Recessed trimless WF 38°



Museum
Helgoland 60 Recessed trimless FL 28°



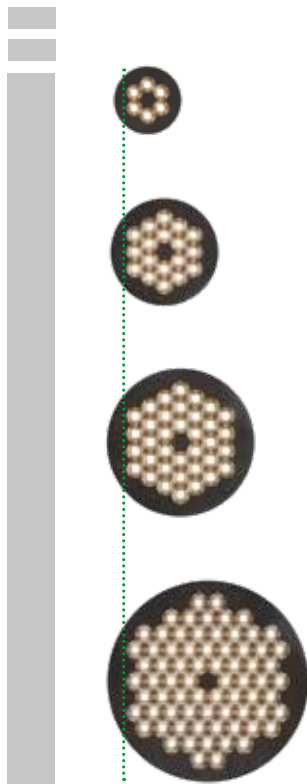
Retail
Helgoland 120 SMD Built-in driver WF 38°

Installation orientation

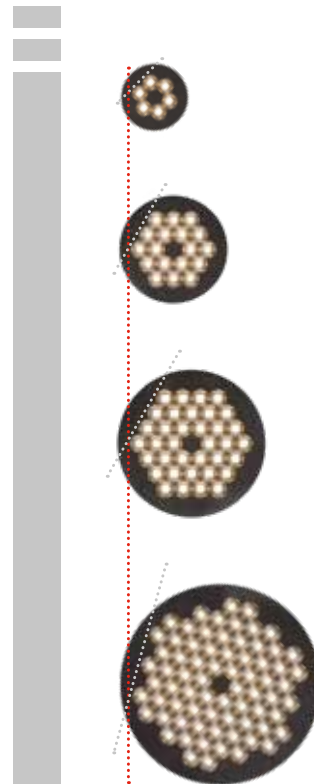
Guidelines for ensuring Symmetrical Light Projection

If installed near a wall as a single unit, in order to ensure a symmetrical projection of the light beam onto the vertical surface, Helgoland must be oriented with one side of the hexagon parallel to the wall.

For multiple-unit installations, maintain the same orientation for each individual fixture.

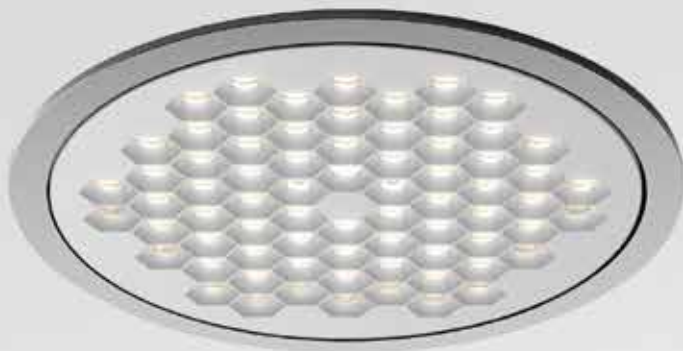


Correct orientation ensuring symmetrical light projection onto the wall.

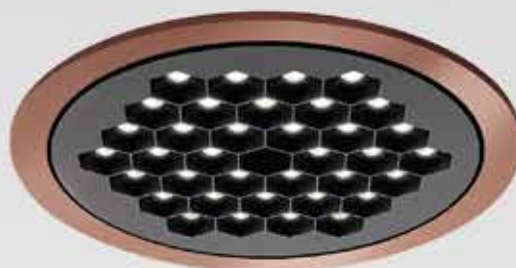


Incorrect orientation resulting in asymmetrical light projection onto the wall.

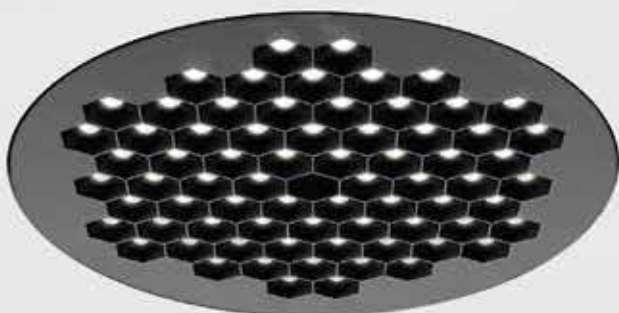
Trim



Helgoland 160



Helgoland 120



Trimless

Frame - Trim

- Black
- White
- Silver
- Copper
- Cobalt blue

Light engine

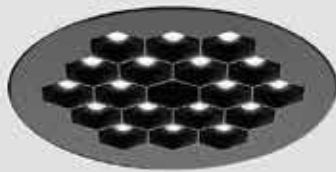
- Black
- White



Helgoland 90



Helgoland 60



Helgoland

Recessed version



Helgoland 120



Helgoland 160

Frame - Trim

- Black
- White
- Silver
- Copper
- Cobalt blue

Light engine

- Black
- White



Helgoland 60



Helgoland 90

Helgoland

SMD Remote driver version



Helgoland 160



Helgoland 120

Frame - Trim

- Black
- White
- Silver
- Copper
- Cobalt blue

Light engine

- Black
- White



Helgoland 160



Helgoland 120

Helgoland

SMD Built-in driver version

Responsible energy consumption

up to 150 lm/W

High efficiency
Up to 80%

Extreme glare control
UGR<19

High uniformity
No multi-shadows

CRI 90

60 mm



Helgoland 60 (6 LEDs)
Ø 60 x h 12,5 mm
Total power: 2,6W
3000K



FL 28° 319lm
WF 38° 377lm
XF 60° 367lm

90 mm



Helgoland 90 (18 LEDs)
Ø 90 x h 12,5 mm
Total power: 6W
3000K



FL 28° 756lm
WF 38° 893lm
XF 60° 869lm

120 mm



Helgoland 120 (36 LEDs)
Ø 120 x h 12,5 mm
Total power: 8,5W
3000K

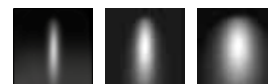


FL 28° 1080lm
WF 38° 1277lm
XF 60° 1243lm

160 mm



Helgoland 160 (72 LEDs)
Ø 160 x h 12,5 mm
Total power: 17W
3000K



FL 28° 2141lm
WF 38° 2530lm
XF 60° 2463lm



FL 28° (2X14°)



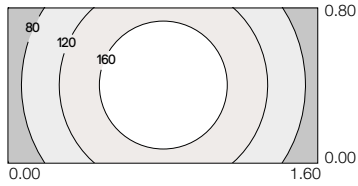
WF 38° (2X19°)



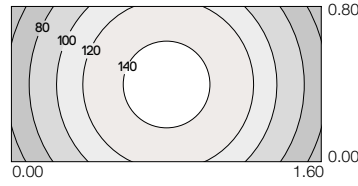
XF 60° (2X30°)

Helgoland 60

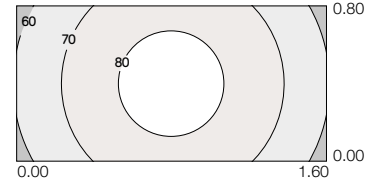
3000K



Installation h 3200 mm - Desk h 750 mm
 $E_{av} = 119 \text{ lx}$ $u_0 = 0,352$



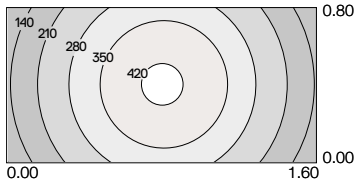
Installation h 3200 mm - Desk h 750 mm
 $E_{av} = 110 \text{ lx}$ $u_0 = 0,539$



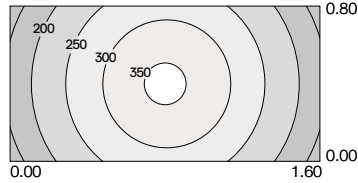
Installation h 3200 mm - Desk h 750 mm
 $E_{av} = 72 \text{ lx}$ $u_0 = 0,788$

Helgoland 90

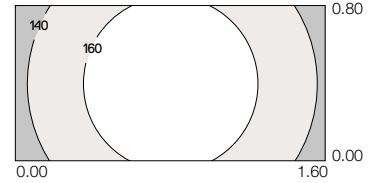
3000K



Installation h 3200 mm - Desk h 750 mm
 $E_{av} = 271 \text{ lx}$ $u_0 = 0,371$



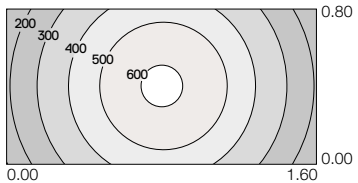
Installation h 3200 mm - Desk h 750 mm
 $E_{av} = 259 \text{ lx}$ $u_0 = 0,562$



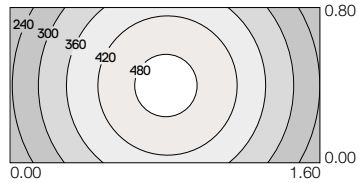
Installation h 3200 mm - Desk h 750 mm
 $E_{av} = 159 \text{ lx}$ $u_0 = 0,799$

Helgoland 120

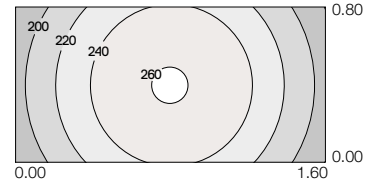
3000K



Installation h 3200 mm - Desk h 750 mm
 $E_{av} = 390 \text{ lx}$ $u_0 = 0,359$



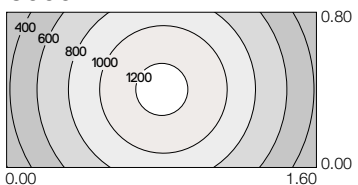
Installation h 3200 mm - Desk h 750 mm
 $E_{av} = 367 \text{ lx}$ $u_0 = 0,562$



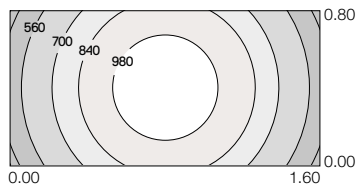
Installation h 3200 mm - Desk h 750 mm
 $E_{av} = 229 \text{ lx}$ $u_0 = 0,793$

Helgoland 160

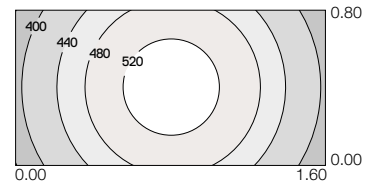
3000K



Installation h 3200 mm - Desk h 750 mm
 $E_{av} = 792 \text{ lx}$ $u_0 = 0,356$



Installation h 3200 mm - Desk h 750 mm
 $E_{av} = 785 \text{ lx}$ $u_0 = 0,529$



Installation h 3200 mm - Desk h 750 mm
 $E_{av} = 472 \text{ lx}$ $u_0 = 0,782$

HELGOLAND

White Black



01



04



FL 28°



WF 38°



XF 60°

*3500K on request.

Light engine to be completed with accessories and drivers for different type of installations. When installed near a wall, orient light engine with any side of the hexagon parallel to the wall.

MacAdam 3SDCM
Life L70(17k) 102000h
CRI=90

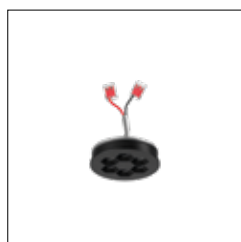
IP20



Glow wire test
650°

Light Engine

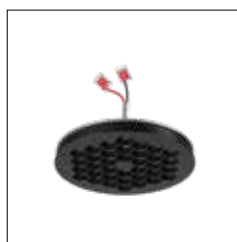
W	Size	Weight	Supply voltage	Current	Beam	Flux	CCT*	Code					
2,6W	60 mm	0,05 kg	8,5V	300 mA	FL 28°	300 lm	2700K	AX010. 01/04					
						319 lm	3000K	AX004. 01/04					
						319 lm	4000K	AX005. 01/04					
					WF 38°	355 lm	2700K	AX006. 01/04					
						377 lm	3000K	AX000. 01/04					
						377 lm	4000K	AX001. 01/04					
						XF 60°	345 lm	2700K	AX008. 01/04				
							367 lm	3000K	AX002. 01/04				
							367 lm	4000K	AX003. 01/04				
					6W	90 mm	0,09 kg	17V	350 mA	FL 28°	712 lm	2700K	AX060. 01/04
											756 lm	3000K	AX054. 01/04
											756 lm	4000K	AX055. 01/04
WF 38°	842 lm	2700K	AX056. 01/04										
	893 lm	3000K	AX050. 01/04										
	893 lm	4000K	AX051. 01/04										
	XF 60°	819 lm	2700K	AX058. 01/04									
		869 lm	3000K	AX052. 01/04									
		859 lm	4000K	AX053. 01/04									
8,5W	120 mm	0,15 kg	17V	500 mA						FL 28°	1018 lm	2700K	AX110. 01/04
											1080 lm	3000K	AX104. 01/04
											1080 lm	4000K	AX105. 01/04
					WF 38°	1204 lm	2700K	AX106. 01/04					
						1277 lm	3000K	AX100. 01/04					
						1277 lm	4000K	AX101. 01/04					
						XF 60°	1172 lm	2700K	AX108. 01/04				
							1243 lm	3000K	AX102. 01/04				
							1243 lm	4000K	AX103. 01/04				
					17W	160 mm	0,26 kg	34V	500 mA	FL 28°	2018 lm	2700K	AX160. 01/04
											2141 lm	3000K	AX154. 01/04
											2141 lm	4000K	AX155. 01/04
WF 38°	2385 lm	2700K	AX156. 01/04										
	2530 lm	3000K	AX150. 01/04										
	2530 lm	4000K	AX151. 01/04										
	XF 60°	2322 lm	2700K	AX158. 01/04									
		2463 lm	3000K	AX152. 01/04									
		2463 lm	4000K	AX153. 01/04									



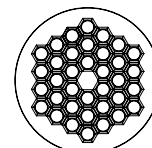
Ø60



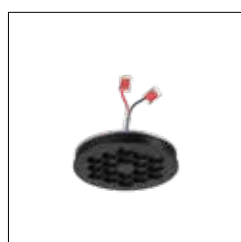
12,5



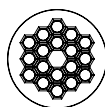
Ø120



12,5



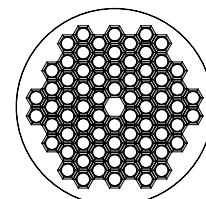
Ø90



12,5



Ø160



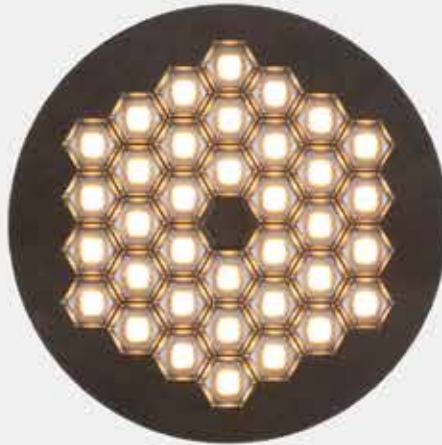
12,5



Helgoland 60



Helgoland 90



Helgoland 120



Helgoland 160

HELGOLAND



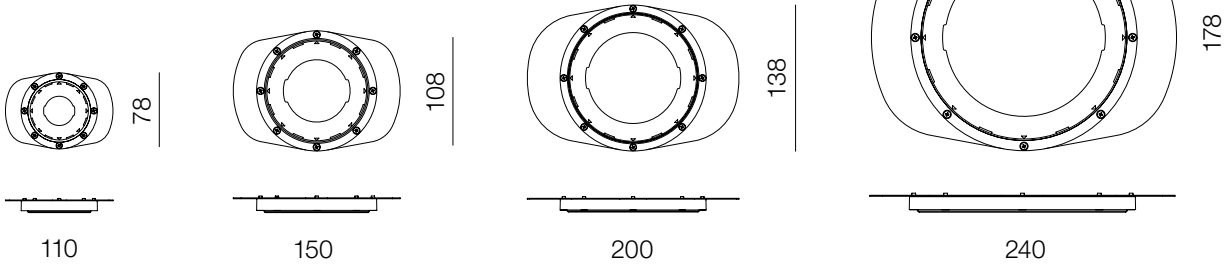
For ceilings thickness of 12,5 mm.
Light engine must be ordered separately.

RECESSED FOR CEILING THICKNESS = 12,5 MM

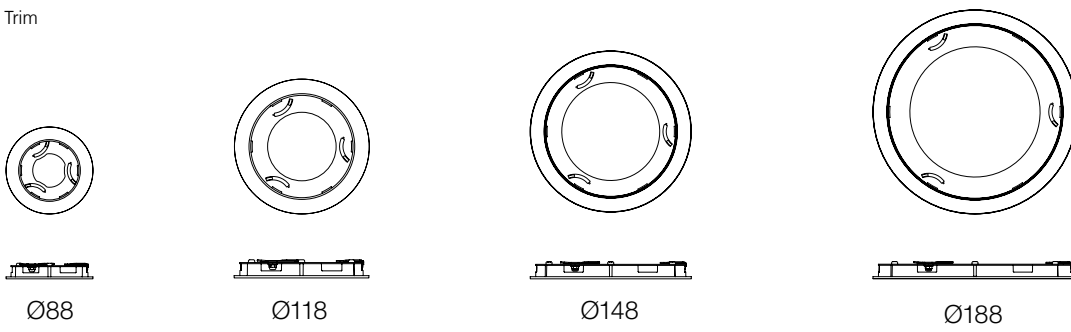
Accessories		Weight	Type	Code
60mm	Trimless	0,045 kg	Trimless	AX50000
60mm	Trim	0,062 kg	Trim	AX501. 01/04/02/03/05
90mm	Trimless	0,072 kg	Trimless	AX55000
90mm	Trim	0,091 kg	Trim	AX551. 01/04/02/03/05
120mm	Trimless	0,102 kg	Trimless	AX60000
120mm	Trim	0,116 kg	Trim	AX601. 01/04/02/03/05
160mm	Trimless	0,140 kg	Trimless	AX65000
160mm	Trim	0,153 kg	Trim	AX651. 01/04/02/03/05



Trimless



Trim



HELGOLAND

For recessed versions drivers have to be ordered separately.
¹See table related to wire sections on the instruction sheet.
²See instruction sheet for installation, as alternative remote driver.

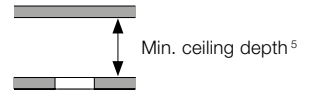
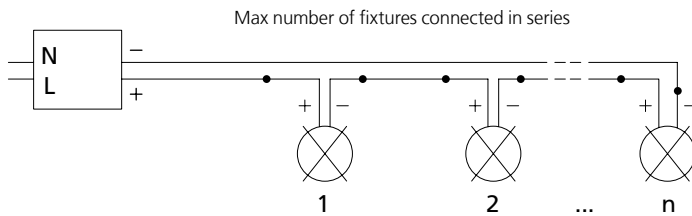
IP20

RECESSED FOR CEILING THICKNESS = 12,5 MM

Helgoland size	Class	W	Driver type	L _{mm}	W _{mm}	H _{mm}	Circuit Breaker 16A	Cable length ¹	Supply voltage	Current setting	V _f module	N.fixtures in series connection	Ceiling depth ⁵ Trim Trimless	Code	
60	⊕		22W Undimmable	146,5	42,5	22	A: 30	15 m	220-240V	300 mA	8,5V	2 - 4	60 ⁴	100 ²	DV1037
			25W DALI2/0-10/PUSH ³	111	52	22	B: 50			350 mA	17V	1 - 2	80	remote	DV1126
			22W DALI2/PUSH ³	146,5	42,5	22	C: 70			300 mA	8,5V	2 - 4	60 ⁴	100 ²	DV1127
			38W APP & PUSH	146,5	44	30	D: 100			300 mA	8,5V	2 - 5	60 ⁴	120 ²	DV1128APP
90	⊕		22W Undimmable	146,5	42,5	22	A: 30	15 m	220-240V	350 mA	17V	1 - 2	90	100	DV1037
			25W DALI2/0-10/PUSH ³	111	52	22	C: 70			350 mA	17V	1 - 2	80	90	DV1126
			38W APP & PUSH	146,5	44	30	D: 100			500 mA	17V	1 - 2	110	120	DV1129APP
120	⊕		22W Undimmable	146,5	42,5	22	A: 30	15 m	220-240V	500 mA	17V	1 - 2	55	55	DV1037
			25W DALI2/0-10/PUSH ³	111	52	22	C: 70			500 mA	17V	1 - 2	35	35	DV1126
			38W APP & PUSH	146,5	44	30	D: 100			500 mA	17V	1 - 2	70	70	DV1104APP
160	⊕		22W Undimmable	146,5	42,5	22	A: 30	15 m	220-240V	500 mA	34V	max 1	30	30	DV1037
			25W DALI2/0-10/PUSH ³	111	52	22	C: 70						30	30	DV1126
			38W APP & PUSH	146,5	44	30	D: 100						35	30	DV1104APP

³ For DALI2 protocol, implementation of part 251 (Luminaire data), 252 (Energy data) and 253 (Diagnostics data).

⁴ Remove the frame for driver substitution.



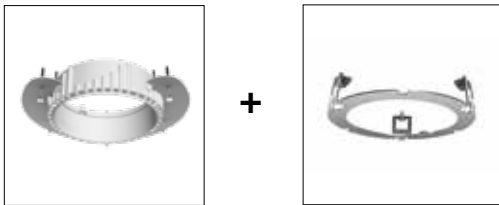
HELGOLAND



For ceilings with a thickness of 12.5 mm or greater.
Light engine must be ordered separately.
For recessed versions drivers have to be ordered separately.

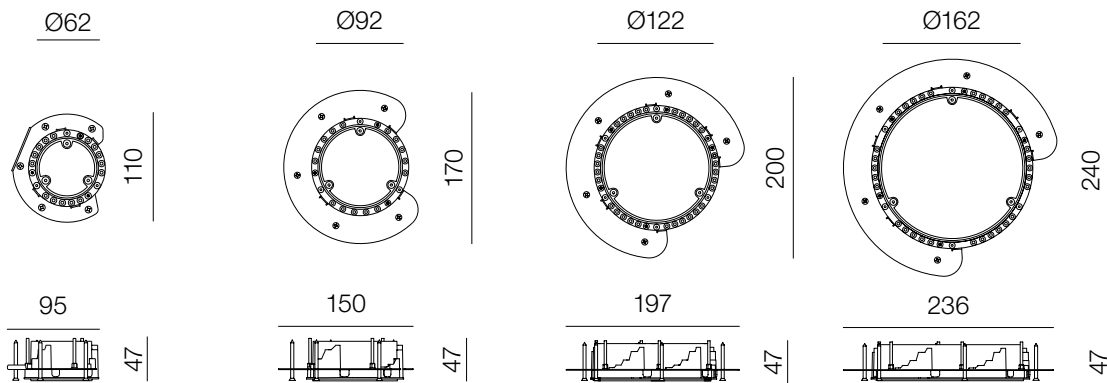
RECESSED FOR CEILING THICKNESS ≥ 12,5 MM

Accessories		Weight	Type	Code
60mm	ø 62 mm	0,082 kg	Trimless	AX52000
		0,080 kg	Trim	AX521 . 01/04/02/03/05
90mm	ø 92 mm	0,120 kg	Trimless	AX57000
		0,100 kg	Trim	AX571 . 01/04/02/03/05
120mm	ø 122 mm	0,160 kg	Trimless	AX62000
		0,120 kg	Trim	AX621 . 01/04/02/03/05
160mm	ø 162 mm	0,190 kg	Trimless	AX67000
		0,140 kg	Trim	AX671 . 01/04/02/03/05



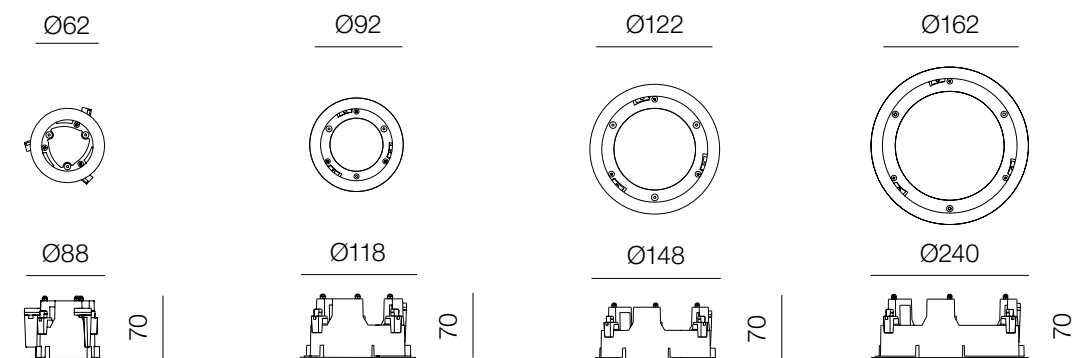
The recessed trimless frame must be used in combination with the adapter for product operation (see pag. 31).

Trimless



The recessed trim frame must be used in combination with the adapter for product operation (see pag. 31).

Trim



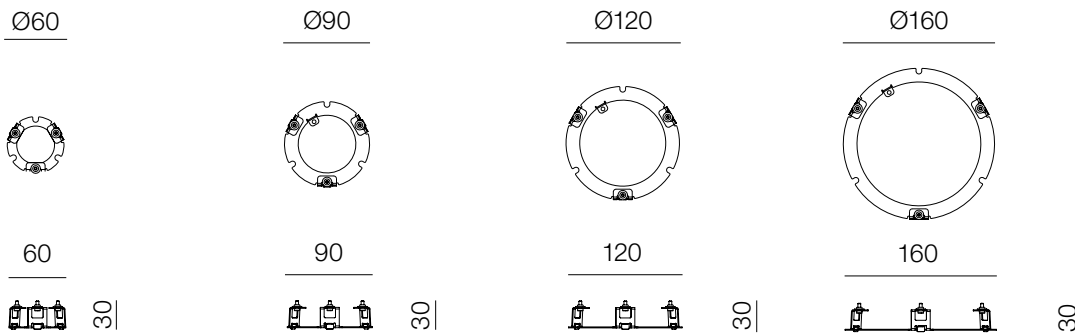
HELGOLAND

For ceilings with a thickness of 12.5 mm or greater.
 For recessed versions drivers have to be ordered separately.
¹ See table related to wire sections on the instruction sheet.
² See instruction sheet for installation, as alternative remote the driver.

IP20

RECESSED FOR CEILING THICKNESS $\geq 12,5$ MM

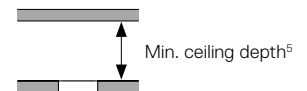
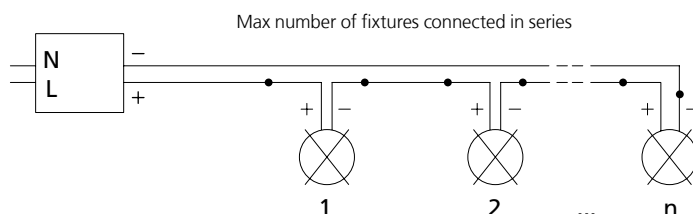
Adapter for trim/trimless recessed frame		Code
Frame	Weight	
60mm	0,030 kg	AX90500
90mm	0,040 kg	AX90600
120mm	0,052 kg	AX90700
160mm	0,170 kg	AX90800



Helgoland size	Class	W	Driver type	L _{mm}	W _{mm}	H _{mm}	Circuit Breaker	16A	Cable length ¹	Supply voltage	Current setting	V _f module	N.fixtures in series connection	Ceiling depth ⁵		Code
														Trim	Trimless	
60	⊕		22W Undimmable	146,5	42,5	22	A: 30		15 m	220-240V	300 mA	8,5V	2 - 4	60 ⁴	100 ²	DV1037
			25W DALI2/0-10/PUSH ³	111	52	22	B: 50				350 mA	17V	1 - 2	80	remote	DV1126
			22W DALI2/PUSH ³	146,5	42,5	22	C: 70				300 mA	8,5V	2 - 4	60 ⁴	100 ²	DV1127
			38W APP & PUSH	146,5	44	30	D: 100				300 mA	8,5V	2 - 5	60 ⁴	120 ²	DV1128APP
90	⊕		22W Undimmable	146,5	42,5	22	A: 30		15 m	220-240V	350 mA	17V	1 - 2	110	90	DV1037
			25W DALI2/0-10/PUSH ³	111	52	22	B: 50				350 mA	17V	1 - 2	120	90	DV1126
			22W DALI2/PUSH ³	146,5	42,5	22	C: 70				500 mA	17V	1 - 2	120	120	DV1129APP
			38W APP & PUSH	146,5	44	30	D: 100				500 mA	17V	1 - 2	120	120	DV1129APP
120	⊕		22W Undimmable	146,5	42,5	22	A: 30		15 m	220-240V	500 mA	17V	1 - 2	30	80	DV1037
			25W DALI2/0-10/PUSH ³	111	52	22	B: 50				500 mA	17V	1 - 2	80	70	DV1126
			22W DALI2/PUSH ³	146,5	42,5	22	C: 70				500 mA	17V	1 - 2	90	90	DV1104APP
			38W APP & PUSH	146,5	44	30	D: 100				500 mA	17V	1 - 2	90	90	DV1104APP
160	⊕		22W Undimmable	146,5	42,5	22	A: 30		15 m	220-240V	500 mA	34V	max 1	30	30	DV1037
			25W DALI2/0-10/PUSH ³	111	52	22	B: 50							30	30	DV1126
			22W DALI2/PUSH ³	146,5	42,5	22	C: 70							35	30	DV1104APP
			38W APP & PUSH	146,5	44	30	D: 100							35	30	DV1104APP

³ For DALI2 protocol, implementation of part 251 (Luminaire data), 252 (Energy data) and 253 (Diagnostics data).

⁴ Remove the frame for driver substitution.



HELGOLAND

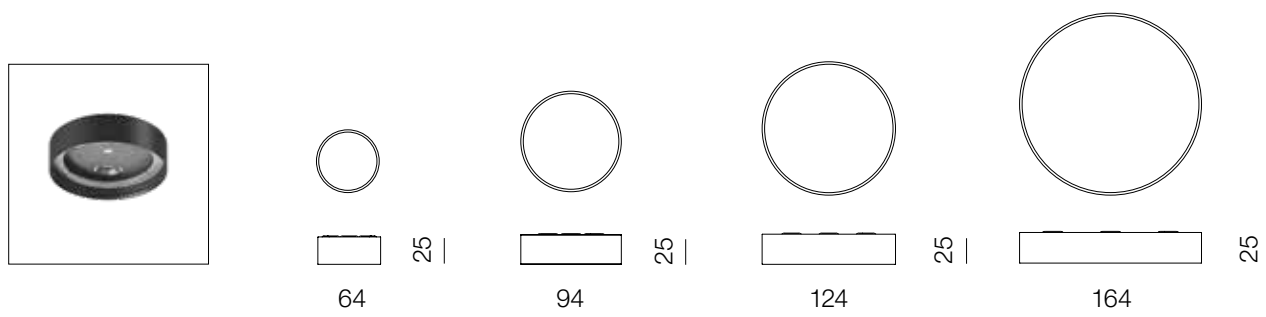


Light engine must be ordered separately.
For SMD Remote driver version drivers have to be ordered separately and they must be removed.
¹ See table related to wire sections on the instruction sheet.

IP20

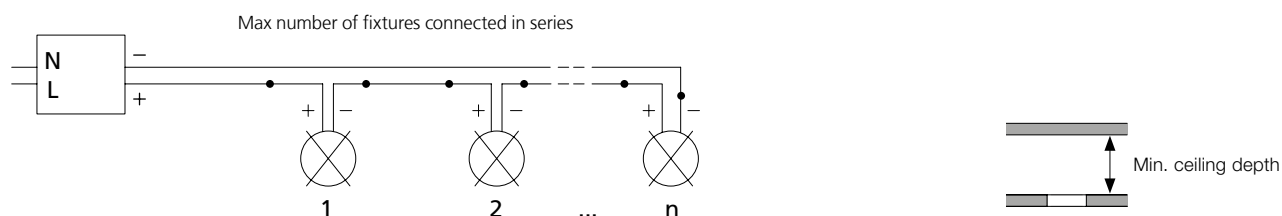
SMD REMOTE DRIVER

Accessories			Code
Frame	Weight	Type	
64 x h25 mm	0,09 kg	Remote driver	AX510. 01/04/02/03/05
94 x h25 mm	0,16 kg	Remote driver	AX560. 01/04/02/03/05
124 x h25 mm	0,25 kg	Remote driver	AX610. 01/04/02/03/05
164 x h25 mm	0,40 kg	Remote driver	AX660. 01/04/02/03/05








Helgoland size	Class	W	Driver type	L _{mm}	W _{mm}	H _{mm}	Circuit Breaker 16A	Cable length ¹	Supply voltage	Current setting	V _f module	N.fixtures in series connection	Ceiling depth ⁴ Trim Trimless	Code
60	⊕	22W	Undimmable	146,5	42,5	22	A: 30	15 m	220-240V	300 mA	8,5V	2 - 4	60 ⁴ 100 ²	DV1037
			25W DALI2/0-10/PUSH ³	111	52	22	B: 50			350 mA	17V	1 - 2	80 remote	DV1126
			22W DALI2/PUSH ³	146,5	42,5	22	C: 70			300 mA	8,5V	2 - 4	60 ⁴ 100 ²	DV1127
			38W APP & PUSH	146,5	44	30	D: 100			300 mA	8,5V	2 - 5	60 ⁴ 120 ²	DV1128APP
90	⊕	22W	Undimmable	146,5	42,5	22	A: 30	15 m	220-240V	350 mA	17V	1 - 2	90 100	DV1037
			25W DALI2/0-10/PUSH ³	111	52	22	B: 50			350 mA	17V	1 - 2	80 90	DV1126
			22W DALI2/PUSH ³	146,5	42,5	22	C: 70			500 mA	17V	1 - 2	110 120	DV1129APP
			38W APP & PUSH	146,5	44	30	D: 100			500 mA	17V	1 - 2		
120	⊕	22W	Undimmable	146,5	42,5	22	A: 30	15 m	220-240V	500 mA	17V	1 - 2	55 55	DV1037
			25W DALI2/0-10/PUSH ³	111	52	22	B: 50			500 mA	17V	1 - 2	35 35	DV1126
			22W DALI2/PUSH ³	146,5	42,5	22	C: 70			500 mA	17V	1 - 2	70 70	DV1104APP
			38W APP & PUSH	146,5	44	30	D: 100							
160	⊕	22W	Undimmable	146,5	42,5	22	A: 30	15 m	220-240V	500 mA	34V	max 1	30 30	DV1037
			25W DALI2/0-10/PUSH ³	111	52	22	B: 50						30 30	DV1126
			22W DALI2/PUSH ³	146,5	42,5	22	C: 70						35 30	DV1104APP
			38W APP & PUSH	146,5	44	30	D: 100							

² For DALI2 protocol, implementation of part 251 (Luminaire data), 252 (Energy data) and 253 (Diagnostics data).



HELGOLAND

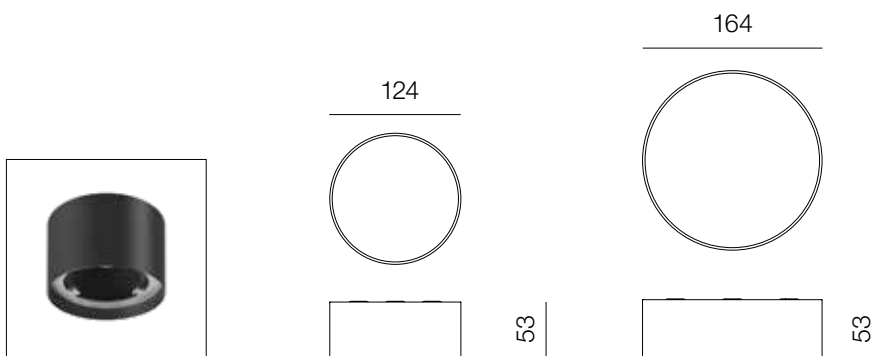
White	Black	Cobalt blue	Copper	Silver	Light engine must be ordered separately.	IP20 ⊕
						
01	04	02	03	05		

SMD BUILT-IN DRIVER

Accessories				
Frame	Weight	W	Supply voltage	Type
124 x h53 mm	0,45 kg	11W	220-240V	Built-in driver
164 x h53 mm	0,62 kg	19W	220-240V	Built-in driver

Undimmable
Code
AX616. 01/04/02/03/05
AX666. 01/04/02/03/05

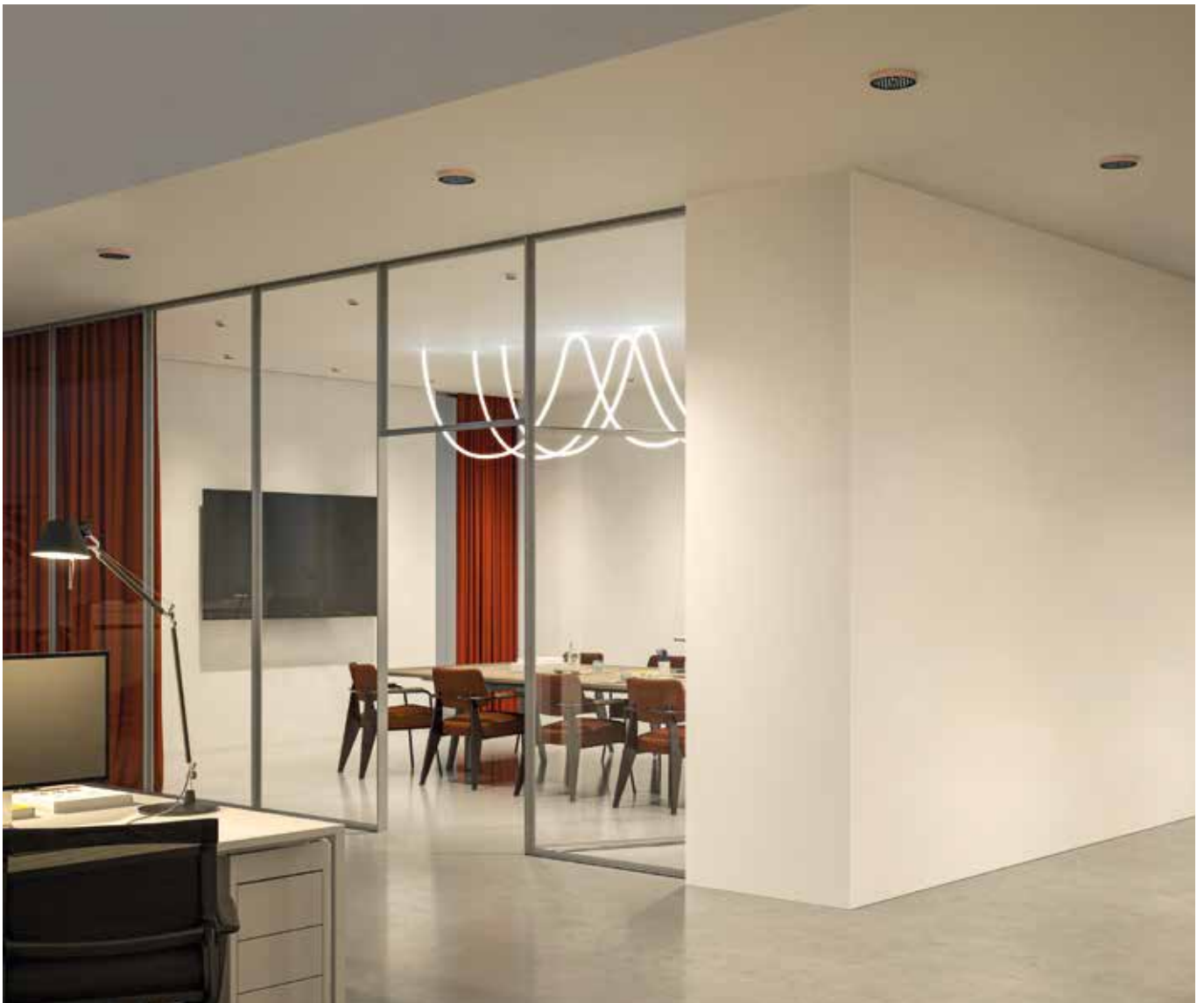
Dimmable DALI
Code
AX615. 01/04/02/03/05
AX665. 01/04/02/03/05

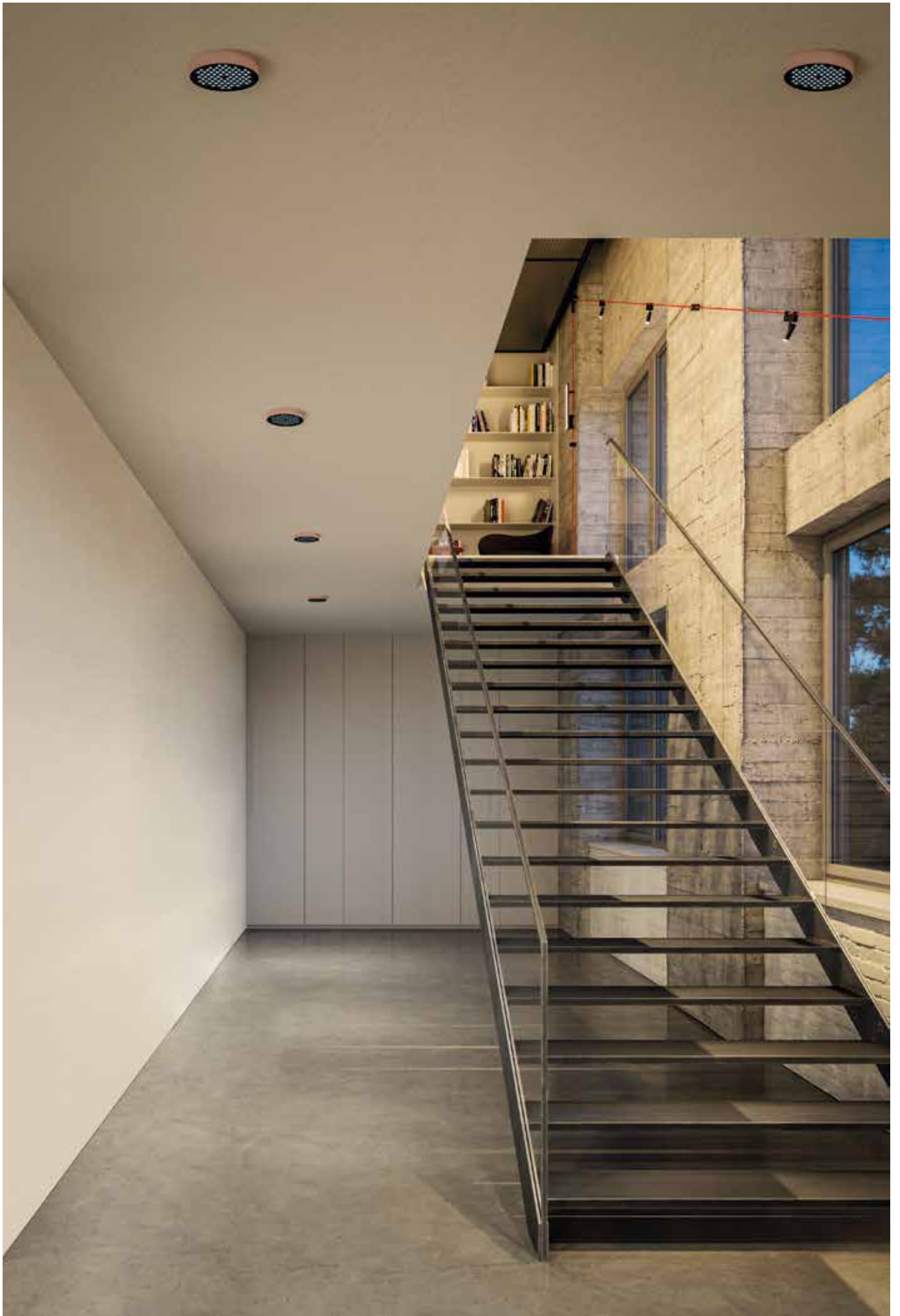


Workplaces

Meeting room - Helgoland 60 SMD No driver WF 38°

Corridor - Helgoland 160 SMD No driver WF 38°

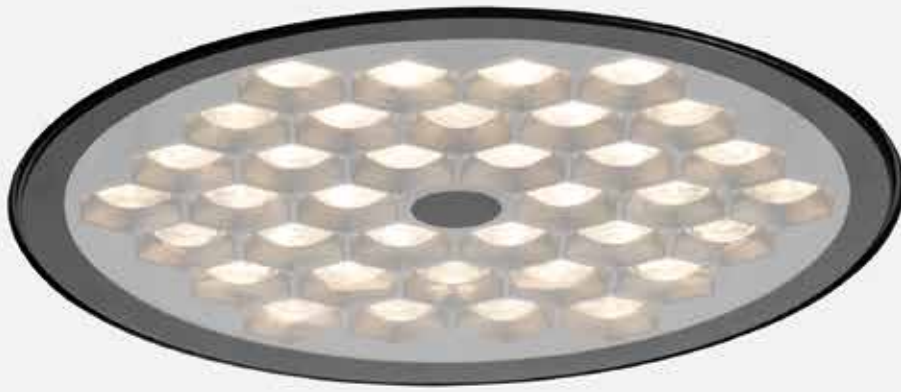




Helgoland IP44

For indoor and closed outdoor spaces







A photograph of a modern building's exterior. The building features a white lower section and a dark grey upper section. A white door with a dark handle is visible on the left. The scene is set outdoors with a lawn and trees in the background.

Higher protection

Covered outdoor spaces and indoor settings with higher level of humidity can be the ideal fit for Helgoland IP44, combining its water splashes shielding with excellent optical performances.

Water splashes shielding

Humidity resistant

IP44 external protection
Water splashes barrier

High efficiency
Up to 80%

Protective shield addition
Steady optical performances

Extreme glare control
UGR<19

Easiness of mounting
Magnetic attachment

CRI 90



Protection Gasket

Silicone

Black serigraphy

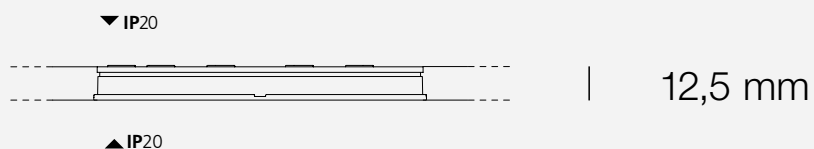
Transparent shield

PMMA



IP20

Helgoland collection



	SIZE				CCT			BEAM			MOUNTING	
	Ø60	Ø90	Ø120	Ø160	2700K	3000K	4000K	FL	WF	XF	RECESSED	SMD
IP20	●	●	●	●	●	●	●	●	●	●	●	●



Hospitality
Hotel room - Helgoland IP20 90 Recessed trim WF 38°



Bathroom en-suite - Helgoland IP44 90 Recessed trim FL 28°

HELGOLAND IP44

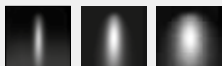
White

Black



01

04



FL 28°

WF 38°

XF 60°

*3500K on request.

Light engine to be completed with accessories and drivers for different type of installations.

When installed near a wall, orient light engine with any side of the hexagon parallel to the wall.

MacAdam 3SDCM
Life L70(17k) 102000h
CRI=90

▼ IP20 / ▲ IP44



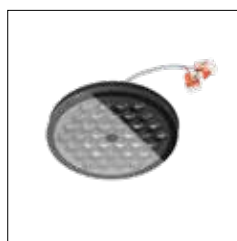
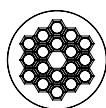
Glow wire test
650°

Light Engine

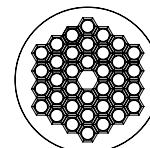
W	Size	Weight	Supply voltage	Current	Beam	Flux	CCT*	Code					
6W	90 mm	0,12 kg	17V	350 mA	FL 28°	676 lm	2700K	AX928. 01/04					
						718 lm	3000K	AX929. 01/04					
						718 lm	4000K	AX931. 01/04					
					WF 38°	800 lm	2700K	AX920. 01/04					
						848 lm	3000K	AX921. 01/04					
						848 lm	4000K	AX923. 01/04					
					XF 60°	778 lm	2700K	AX924. 01/04					
						825 lm	3000K	AX925. 01/04					
						825 lm	4000K	AX927. 01/04					
					8,5W	120 mm	0,21 kg	17V	500 mA	FL 28°	967 lm	2700K	AX948. 01/04
											1026 lm	3000K	AX949. 01/04
											1026 lm	4000K	AX951. 01/04
WF 38°	1144 lm	2700K	AX940. 01/04										
	1213 lm	3000K	AX941. 01/04										
	1213 lm	4000K	AX943. 01/04										
XF 60°	1113 lm	2700K	AX944. 01/04										
	1180 lm	3000K	AX945. 01/04										
	1180 lm	4000K	AX947. 01/04										



Ø90



Ø120





Hospitality
Bathroom en-suite - Helgoland IP44 90 Recessed trim WF 38°

HELGOLAND IP44 RECESSED

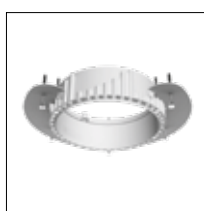


For ceilings with a thickness of 12.5 mm or higher.
Light engine must be ordered separately.
For recessed versions drivers have to be ordered separately.

RECESSED FOR CEILING THICKNESS $\geq 12,5$ MM

Accessories

Frame		Weight	Type	Code
90mm	 \varnothing 110 mm	0,15 kg	Trimless	AX57000
		0,10 kg	Trim	AX571. 01/04/02/03/05
120mm	 \varnothing 140 mm	0,20 kg	Trimless	AX62000
		0,15 kg	Trim	AX621. 01/04/02/03/05



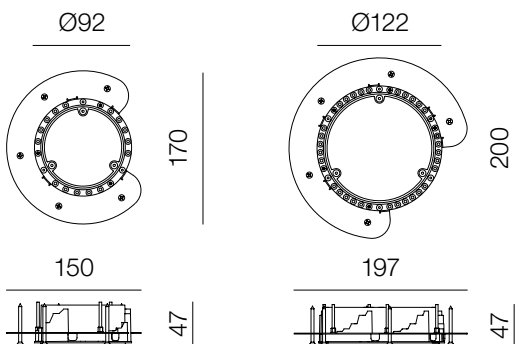
+



The recessed trimless frame must be used in combination with the adapter for product operation (see pag. 31).

Ceiling thickness: 12.5 – 16 – 19 – 25 – 35 – 40 mm.

Trimless



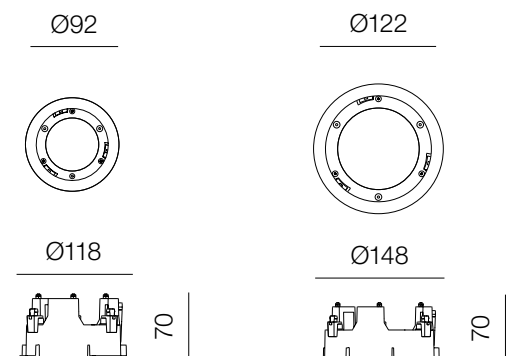
+



The recessed trim frame must be used in combination with the adapter for product operation (see pag. 31).

Ceiling thickness (t): $12,5 \leq t \leq 50$ mm

Trim



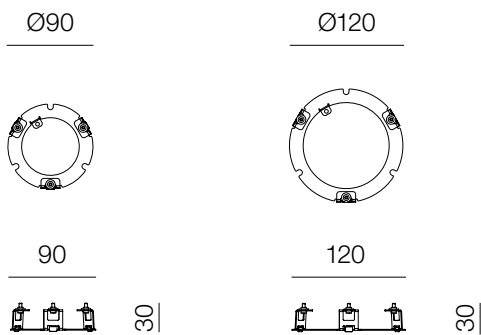
HELGOLAND

For ceilings with a thickness of 12.5 mm or higher.
 For recessed versions drivers have to be ordered separately.
¹ See table related to wire sections on the instruction sheet.
² See instruction sheet for installation, as alternative remote the driver.

IP20

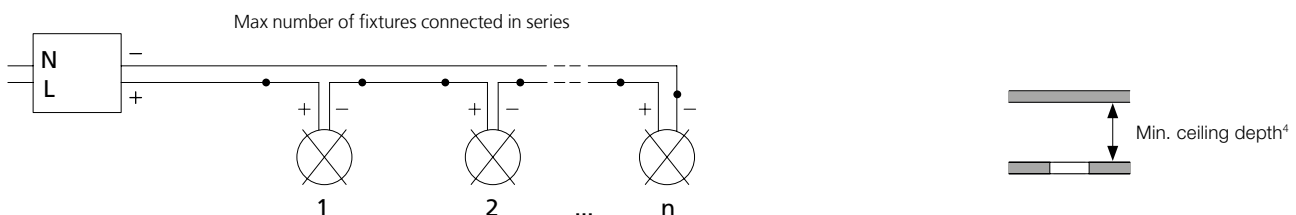
RECESSED FOR CEILING THICKNESS $\geq 12,5$ MM

Adapter for trim/trimless recessed frame		Code
Frame	Weight	
90mm	0,040 kg	AX90600
120mm	0,052 kg	AX90700



Helgoland size	Class	W	Driver type	L _{mm}	W _{mm}	H _{mm}	Circuit Breaker 16A	Cable length ¹	Supply voltage	Current setting	V _i module	N.fixtures in series connection	Ceiling depth ⁴		Code
													Trim	Trimless	
90	⊕		22W Undimmable	146,5	42,5	22	A: 30	15 m	220-240V	350 mA	17V	1 - 2	110	90	DV1037
			25W DALI2/0-10/PUSH ³	111	52	22	B: 50						120	90	DV1126
			38W APP & PUSH	146,5	44	30	C: 70						120	120	DV1129APP
						D: 100									
120	⊕		22W Undimmable	146,5	42,5	22	A: 30	15 m	220-240V	500 mA	17V	1 - 2	30	80	DV1037
			25W DALI2/0-10/PUSH ³	111	52	22	B: 50						80	70	DV1126
			38W APP & PUSH	146,5	44	30	C: 70						90	90	DV1104APP
						D: 100									

³ For DALI2 protocol, implementation of part 251 (Luminaire data), 252 (Energy data) and 253 (Diagnostics data).



Helgoland adjustable



Frame - Trim

- Black
- White
- Silver
- Copper
- Cobalt blue

Light engine

- Black
- White

* See pages 54–55 for light engine color combinations between anti-glare and aesthetic ring.



Light engine colour combinations



Light engine with black anti-glare

Anti-glare

● Black

Aesthetic ring

● Black

○ White

○ Silver

● Copper

● Cobalt blue



Light engine with white anti-glare

Anti-glare

White

Aesthetic ring

White



Aesthetic ring

Anti-glare

Light engine

Universal adaptability

Freedom of movement

Design efficiency

Integration within the space

Flexible installation

From downlight to directional spotlight in one move

Aesthetic modular freedom

Tone-on-tone and contrasting finish combinations

Flexibility in space

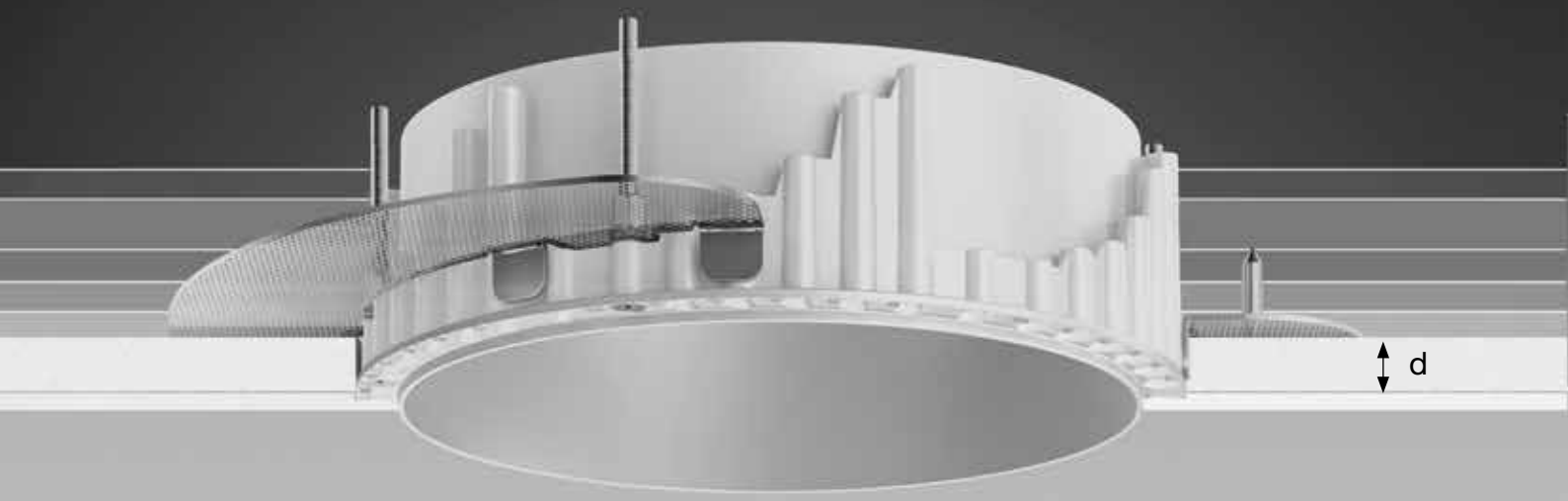
Helgoland downlight confirms its optimized construction also in the adjustable version. The optical engine, just 12,5mm thick, becomes a universal principle of light applicable with various accessories.

Now it opens the opportunity to move the head and orient the emission. With the new body the same element evolves from a downlight to a perfect spot.

The adjustable light engine is inserted into the structure totally flush. It can be extracted, tilted with maximum freedom thanks to a double hinges arm and rotated at 359° on the vertical axis.



Trimless structure
for ceiling thickness (d)
12,5 - 16 - 19 - 25 - 35 - 40 mm



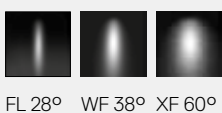
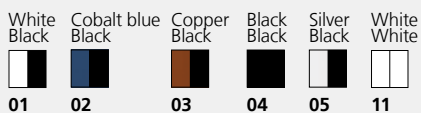
HELGOLAND ADJUSTABLE MOVEMENTS



Trim structure
for ceiling thickness (d)
from 1 mm to 50 mm



HELGOLAND ADJUSTABLE



*3500K on request.
 Light engine to be completed with accessories and drivers for different type of installations.
 Combinations of white anti-glare light engine with aesthetic ring in black, silver, copper and cobalt blue are available upon request.

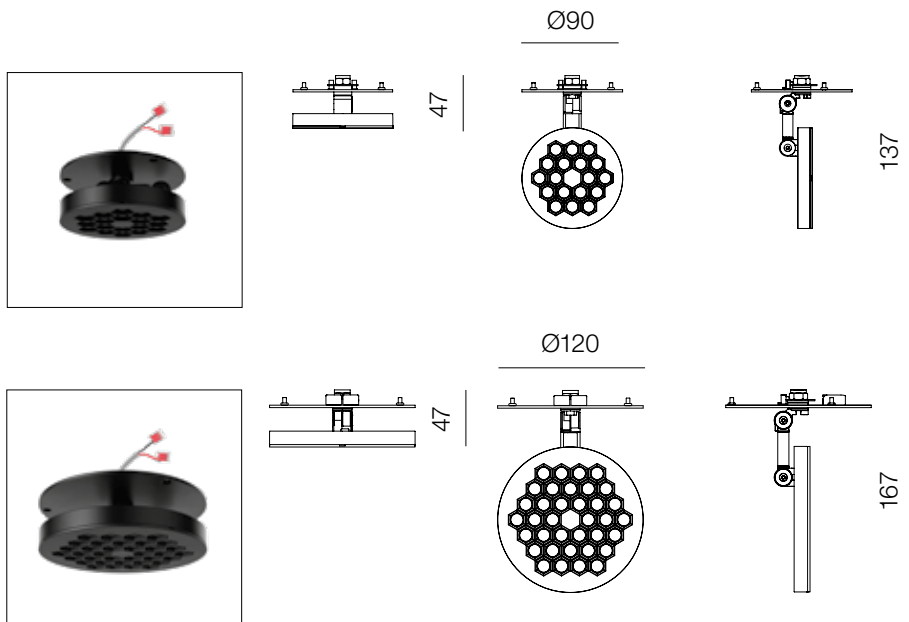
MacAdam 3SDCM
 Life L70(17k) 102000h
 CRI=90

IP20

 Glow wire test 650°

Light Engine

W	Size	Weight	Supply voltage	Current	Beam	Flux	CCT*	Code					
6W	90 mm	0,30 kg	17V	350 mA	FL 28°	712 lm	2700K	AX080. 01/02/03/04/05/11					
						756 lm	3000K	AX074. 01/02/03/04/05/11					
						756 lm	4000K	AX075. 01/02/03/04/05/11					
					WF 38°	842 lm	2700K	AX076. 01/02/03/04/05/11					
						893 lm	3000K	AX070. 01/02/03/04/05/11					
						893 lm	4000K	AX071. 01/02/03/04/05/11					
					XF 60°	819 lm	2700K	AX078. 01/02/03/04/05/11					
						869 lm	3000K	AX072. 01/02/03/04/05/11					
						859 lm	4000K	AX073. 01/02/03/04/05/11					
					8,5W	120 mm	0,48 kg	17V	500 mA	FL 28°	1018 lm	2700K	AX130. 01/02/03/04/05/11
											1080 lm	3000K	AX124. 01/02/03/04/05/11
											1080 lm	4000K	AX125. 01/02/03/04/05/11
WF 38°	1204 lm	2700K	AX126. 01/02/03/04/05/11										
	1277 lm	3000K	AX120. 01/02/03/04/05/11										
	1277 lm	4000K	AX121. 01/02/03/04/05/11										
XF 60°	1172 lm	2700K	AX128. 01/02/03/04/05/11										
	1243 lm	3000K	AX122. 01/02/03/04/05/11										
	1243 lm	4000K	AX123. 01/02/03/04/05/11										





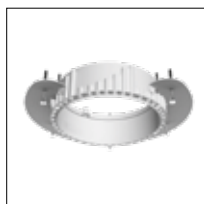
HELGOLAND ADJUSTABLE

White	Black	Cobalt blue	Copper	Silver
01	04	02	03	05

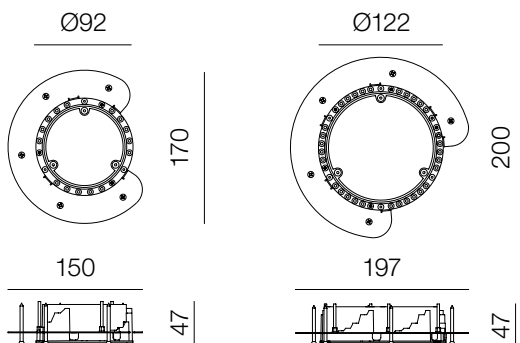
For ceilings with a thickness of 12.5 mm or higher.
Light engine must be ordered separately.

RECESSED

Accessories		Weight	Type	Code
Frame				
90mm	ø 92 mm	0,12 kg	Trimless	AX57000
		0,10 kg	Trim	AX571. 01/04/02/03/05
120mm	ø 122 mm	0,16 kg	Trimless	AX62000
		0,12 kg	Trim	AX621. 01/04/02/03/05



Trimless

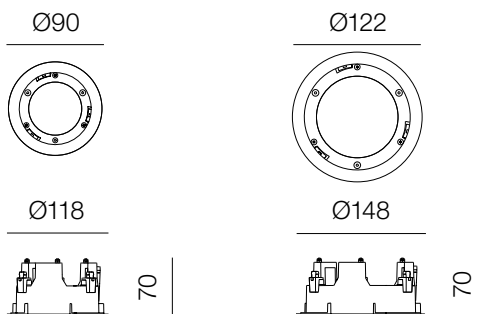


The recessed trimless frame must be used in combination with the adapter for product operation (see pag. 31).

Ceiling thickness: 12.5 – 16 – 19 – 25 – 35 – 40 mm.



Trim



The recessed trim frame must be used in combination with the adapter for product operation (see pag. 31).

Ceiling thickness (t): 12,5 ≤ t ≤ 50 mm

HELGOLAND ADJUSTABLE

For recessed versions drivers have to be ordered separately.
See table related to wire sections on the instruction sheet.
See instruction sheet for installation, as alternative remote the driver.

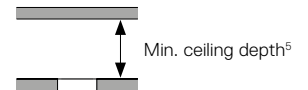
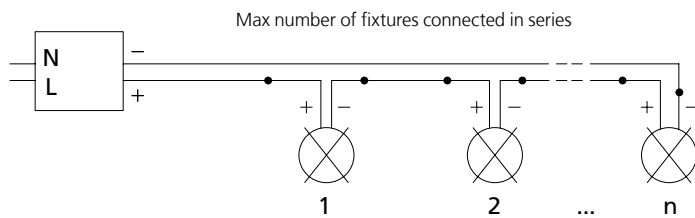
IP20

RECESSED

Helgoland size	Class	W	Driver type	L _{mm}	W _{mm}	H _{mm}	Circuit Breaker 16A	Cable length ¹	Supply voltage	Current setting	V _f module	N.fixtures in series connection	Ceiling depth ⁵ Trim	Trimless	Code
90	◆		22W Undimmable	146,5	42,5	22	A: 30	15 m	220-240V	350 mA	17V	1 - 2	110	90	DV1037
			25W DALI2/0-10/PUSH ³	111	52	22	B: 50			350 mA	17V	1 - 2	120	90	DV1126
			38W APP & PUSH	146,5	44	30	C: 70			500 mA	17V	1 - 2	120	120	DV1129APP
120	◆		22W Undimmable	146,5	42,5	22	A: 30	15 m	220-240V	500 mA	17V	1 - 2	30	80	DV1037
			25W DALI2/0-10/PUSH ³	111	52	22	B: 50			500 mA	17V	1 - 2	80	70	DV1126
			38W APP & PUSH	146,5	44	30	C: 70			500 mA	17V	1 - 2	90	90	DV1104APP
						D: 100									

³For DALI2 protocol, implementation of part 251 (Luminaire data), 252 (Energy data) and 253 (Diagnostics data).

⁴Remove the frame for driver substitution.

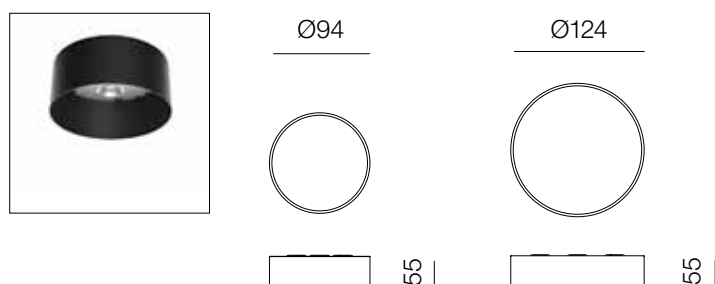


HELGOLAND ADJUSTABLE

White 01	Black 04	Cobalt blue 02	Copper 03	Silver 05	Light engine must be ordered separately.	IP20
					For SMD Remote driver versions drivers have to be ordered separately and they must be removed.	
¹ See table related to wire sections on the instruction sheet.						

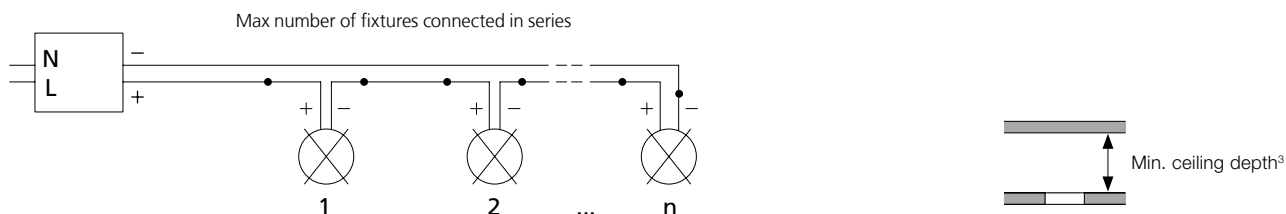
SMD REMOTE DRIVER

Accessories			Code
Frame	Weight	Type	
94 x h55 mm	0,16 kg	Remote driver	AX580. 01/04/02/03/05
124 x h55 mm	0,25 kg	Remote driver	AX630. 01/04/02/03/05








Helgoland size	Class	W	Driver type	L _{mm}	W _{mm}	H _{mm}	Circuit Breaker 16A	Cable length ¹	Supply voltage	Current setting	V _f module	N.fixtures in series connection	Ceiling depth ³		Code
													Trim	Trimless	
90	⊕		22W Undimmable	146,5	42,5	22	A: 30	15 m	220-240V	350 mA	17V	1 - 2	90	100	DV1037
			25W DALI2/0-10/PUSH ²	111	52	22	B: 50			350 mA	17V	1 - 2	80	90	DV1126
			38W APP & PUSH	146,5	44	30	C: 70 D: 100			500 mA	17V	1 - 2	110	120	DV1129APP
120	⊕		22W Undimmable	146,5	42,5	22	A: 30	15 m	220-240V	500 mA	17V	1 - 2	55	55	DV1037
			25W DALI2/0-10/PUSH ²	111	52	22	B: 50			500 mA	17V	1 - 2	35	35	DV1126
			38W APP & PUSH	146,5	44	30	C: 70 D: 100			500 mA	17V	1 - 2	70	70	DV1104APP

²For DALI2 protocol, implementation of part 251 (Luminaire data), 252 (Energy data) and 253 (Diagnostics data).



HELGOLAND ADJUSTABLE

White	Black	Cobalt blue	Copper	Silver	Light engine must be ordered separately.	IP20
						
01	04	02	03	05		

SMD BUILT-IN DRIVER

Accessories

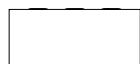
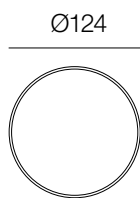
Frame	Weight	W	Supply voltage	Type
124 x h87 mm	0,51 kg	11W	220-240V	Built-in driver
	0,48 kg	11W	220-240V	Built-in driver

Undimmable

Code
AX636. 01/04/02/03/05

Dimmable DALI

Code
AX635. 01/04/02/03/05



87

Headquarters

Artemide S.p.A.
Via Bergamo, 18
20006 Pregnana Milanese (MI), Italy
Tel. +39 02 93518.1
Tel. +39 02 93526.1
Numero verde 800 834 093
(from Italy only)
info@artemide.com
artemide.com

Artemide S.p.A.
si riserva la facoltà di modificare, in qualunque
momento e senza preavviso, le caratteristiche
tecniche degli elementi illustrati nel presente
catalogo.

Artemide S.p.A.
reserves the right to change, at any time and
without prior warning, the technical specifications
of any product illustrated in this catalogue.

Artemide S.p.A.
se réserve le droit de modifier, à n'importe
quel moment et sans préavis, les caractéristiques
techniques des éléments illustrés dans ce
catalogue.

Artemide S.p.A.
behält sich das Recht vor jederzeit und ohne
Ankündigung die technischen Daten der im
Katalog abgebildeten Produkte zu ändern.

Artemide S.p.A.
se reserva la facultad de modificar, en cualquier
y sin aviso previo, las características técnicas
de los elementos ilustrados en el presente
catálogo.

V.2 2026